

ANGLEPOISE®

# Anglepoise Original 1227 Pendant

LA3175

SOURCE: <https://www.davidvillagelighting.co.uk/product/Anglepoise-Original-1227-Pendant/15599>



## PRODUCT DESCRIPTION

Designer: George Carwardine

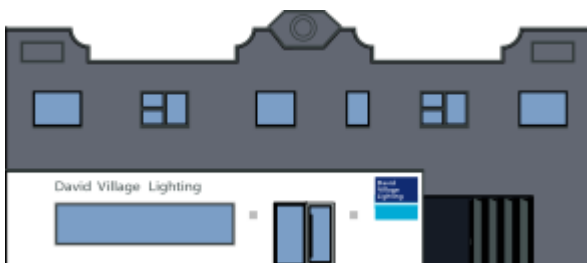
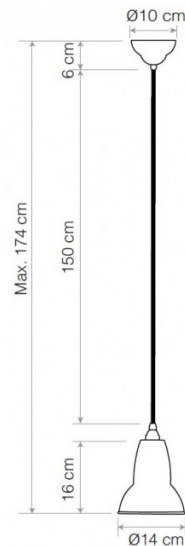
### Anglepoise Original 1227 Pendant Light

The iconic Original 1227 Pendant from Anglepoise gets its design from the [Original 1227 table lamp](#), which was first released in 1935 by George Carwardine. The classic shade has timeless lines and produces an attractive spotlight, working best over a table in both home and office spaces.

Available in two traditional Anglepoise colours and with chrome fittings, the 1227 pendant is a visual sensation which adds a touch of elegance to any room. To create a strong aesthetic, match with the bigger versions of this light, the Original 1227 [Midi](#) and [Maxi](#) pendants, or put alongside other lights from the wider [Original 1227 collection by Anglepoise](#).

## PRODUCT SPECIFICATION

- Light Source:** 1 x Max 10W E27 (excluded)
- IP Code:** 20
- Dimming:** Dimmable via mains phase dimming.
- Dimensions:** Shade: Ø14cm  
Shade Height: 16cm  
Ceiling Rose: Ø10cm  
Cable Length: 172cm



For all sales and technical enquiries, please contact:

+44 (0)114 263 4266

[info@davidvillagelighting.co.uk](mailto:info@davidvillagelighting.co.uk)

[www.davidvillagelighting.co.uk](http://www.davidvillagelighting.co.uk)