

ANGLEPOISE®

Anglepoise Original 1227 Brass Pendant

LA3158

SOURCE: <https://www.davidvillagelighting.co.uk/product/Anglepoise-Original-1227-Brass-Pendant/15587>



PRODUCT DESCRIPTION

Designer: George Carwardine

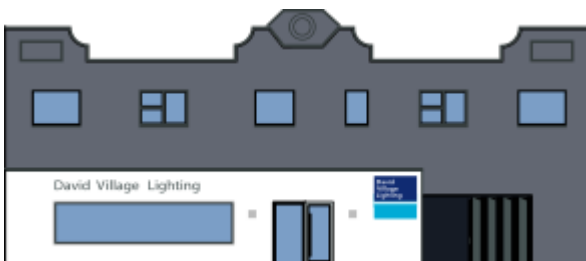
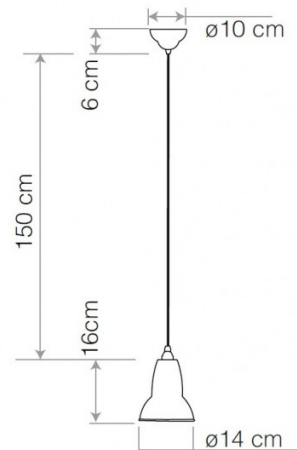
Original 1227 Brass Pendant Light by Anglepoise

The Original 1227 Brass Pendant light is part of the [Anglepoise Original 1227 collection](#) which produces re-imaginings of George Carwardine's 1935 [desk lamp](#) design that is one of the most iconic lamps to be produced in the 20th century.

Taking its shape from the shade of this design, the 1227 Brass pendant is timeless and graceful due to its delicate brass fittings and weaved fabric cable. Looking particularly splendid in kitchens and dining spaces, this light creates a nice glow to hang over your table or as a main feature light. To create a stunning light spectacle, buy multiple pendants to cluster together or try pairing it with the larger version, the [Original 1227 Brass Maxi Pendant](#).

PRODUCT SPECIFICATION

- Light Source:** 1 x max 10W E27 (excluded)
- IP Code:** 20
- Dimming:** Dimmable via mains phase dimming
- Dimensions:** Ø14cm shade
16cm shade height
Ø10cm ceiling rose
150 cable length



For all sales and technical enquiries, please contact:

+44 (0)114 263 4266

info@davidvillagelighting.co.uk

www.davidvillagelighting.co.uk