



# Artemide Melete LED Wall Light

LA3114

SOURCE: <https://www.davidvillagelighting.co.uk/product/Artemide-Melete-LED-Wall-Light/15540>



## PRODUCT DESCRIPTION

**Designer:** Pio & Tito Toso

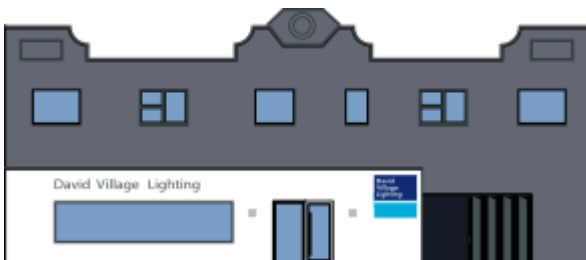
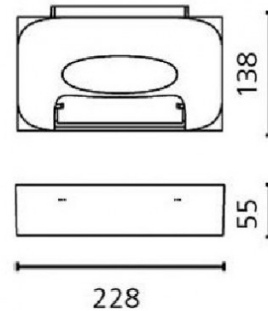
### Melete LED by Artemide

Designs by the brothers Pio and Tito Toso tend to have a poetic sensation and a power that is meant to evoke. Their study on lighting and design is all about simplicity, one that is not trivial or frigid.

Melete is one of their designs, a single piece made of die-cast aluminium, and its shape is meant to interact with the interior architecture of the room. The internal part is carved and emits a warm light, both upwards and downwards. Melete wall light is available in a white finish but you can select the colour temperature, either 2700K or 3000K.

## PRODUCT SPECIFICATION

- Light Source:** Warmest White (2700K) 27W, 2700K, 2047 lumens  
Warm White (3000K) 27W, 3000K, 2191 lumens
- IP Code:** 20
- Dimming:** Dimmable with Push dimming systems only. Please consult your electrician, additional wiring may be required on site.
- Dimensions:** 22.8 cm width  
5.5 cm height  
13.8 cm depth



**For all sales and technical enquiries, please contact:**

+44 (0)114 263 4266

[info@davidvillagelighting.co.uk](mailto:info@davidvillagelighting.co.uk)

[www.davidvillagelighting.co.uk](http://www.davidvillagelighting.co.uk)