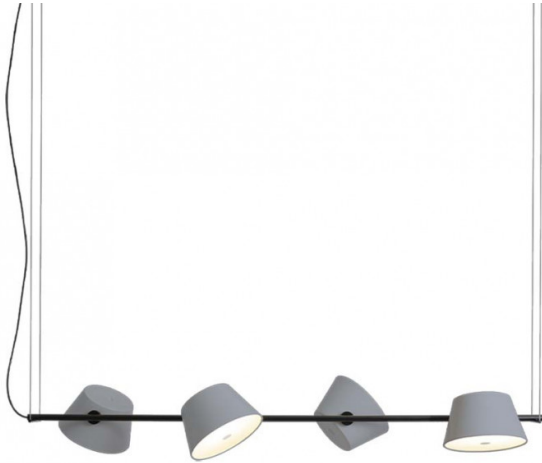


marset

Marset Tam Tam 4 & 6 Pendant

LA3084

SOURCE: <https://www.davidvillagelighting.co.uk/product/Marset-Tam-Tam-4-6-Pendant/15500>



PRODUCT DESCRIPTION

Designer: Fabien Dumas

Marset Tam Tam 4 & 6 pendant light

The Tam Tam linear collection by Marset is a fun, dynamic design that features a long ceiling canopy with shades attached that resemble grapes on a vine. The designer, Fabien Dumas, has created a customizable pendant light that is ideal for over a table, office, or study area to give a space that touch of modern design and playfulness.

Available with 4 shades or 6, the Tam Tam gives you full range to make this stunning design suit any interior. The shades come in a selection of classic colours to choose from. You can mix and match with a multicoloured design or keep it simple and go monochrome. This customisable feature of the Tam Tam allows you to create your own bespoke light that would be ideal for anywhere in your home.

PRODUCT SPECIFICATION

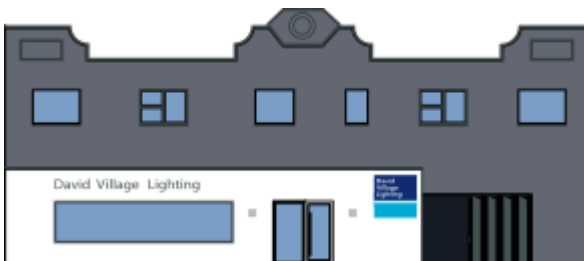
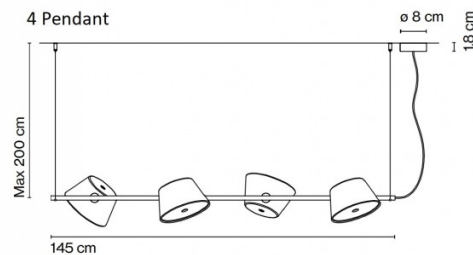
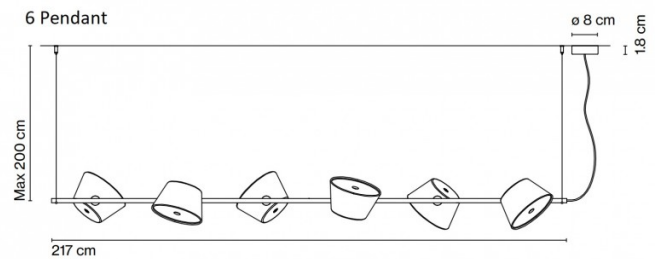
Light Source: **Tam Tam 4:** 4 x Max 5W E14 LED (excluded)
Tam Tam 6: 6 x Max 5W E14 LED (excluded)

IP Code: 20

Dimming: Dimmable via mains phase dimming.

Dimensions: **Tam Tam 4:**
 Length: 145cm
 Width: 46cm
 Max Drop: 200cm
 Shade: Ø22cm

Tam Tam 6:
 Length: 217cm
 Width: 46cm
 Max Drop: 200cm
 Shade: Ø22cm



For all sales and technical enquiries, please contact:

+44 (0)114 263 4266

info@davidvillagelighting.co.uk

www.davidvillagelighting.co.uk