

marset

**Marset Santorini Fixed Stem
Wall Light**

LA3075

SOURCE: <https://www.davidvillagelighting.co.uk/product/Marset-Santorini-Fixed-Stem-Wall-Light/15491>

PRODUCT DESCRIPTION

Designer: Sputnik Estudio

**Marset Santorini Fixed Stem Wall
Light**

Inspired by the lanterns found on fishing boats, this collection of outdoor customisable lamps allows you to create multiple compositions. Users can choose how many shades to place on the diffuser, along with their order, position and direction. This interplay of combinations yields a rich array of direct or reflected light.

This fixed stem version of the Santorini light is mounted to the wall with a metallic wall mount that adds an industrial touch to a space. The intricate shades can be customised which not only gives each light a unique look but it also plays with the light in different ways. The direction of the shades will determine the direction of the light output.



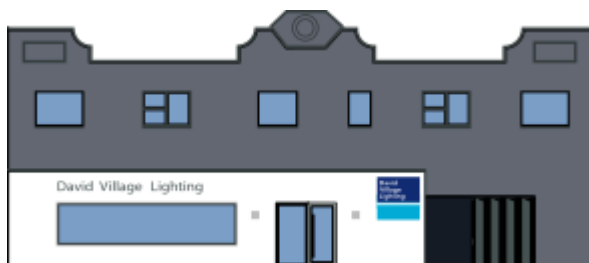
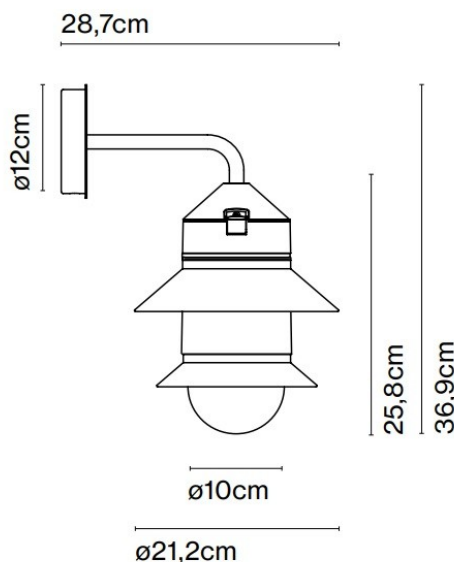
PRODUCT SPECIFICATION

Light Source: 1 x Max 8W E27 LED (excluded)

IP Code: 65

Dimming: Dimmable via mains phase dimming.

Dimensions: Shade: Ø21.2cm
Diffuser: Ø10cm
Depth: 28.7cm
Length: 36.9cm



For all sales and technical enquiries, please contact:

+44 (0)114 263 4266

info@davidvillagelighting.co.uk

www.davidvillagelighting.co.uk