

innermost

# Innermost Beads Penta Pendant

LA9978METAL

SOURCE: <https://www.davidvillagelighting.co.uk/product/Innermost-Beads-Penta-Pendant/15444>



## PRODUCT DESCRIPTION

**Designer:** Winnie Lui

### Innermost Beads Penta Pendant

Designed by renowned jewellery artist Winnie Lui, the Innermost Beads Penta Pendant light merges the best of jewellery design with lighting artistry. This unique light is crafted from spun stainless steel and polycarbonate, each bead meticulously placed to create a visual texture. When illuminated, the pendant forms a radiant cluster of reflections, resembling inlaid jewels.

Available in Chrome, Copper, and Gunmetal finishes, the Beads pendant complements both modern and eclectic interiors. It is ideal for spaces that require a bold statement piece, such as dining rooms, lounges, and open-plan settings. With its clear suspension cable, the Beads pendant appears to float in mid-air, adding a touch of magic to any room.

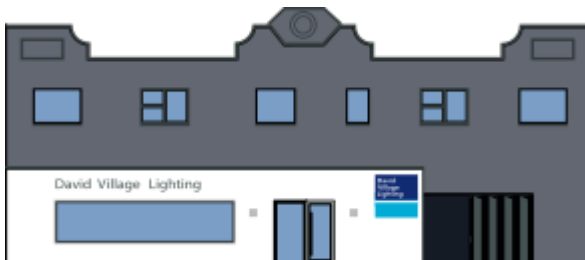
## PRODUCT SPECIFICATION

**Light Source:** 1 x Max 100W E27 (excluded)

**IP Code:** 20

**Dimming:** Dimmable via mains phase dimming.

**Dimensions:** Ø54cm  
Height: 48cm  
Cable length: 4m



**For all sales and technical enquiries, please contact:**

+44 (0)114 263 4266

[info@davidvillagelighting.co.uk](mailto:info@davidvillagelighting.co.uk)

[www.davidvillagelighting.co.uk](http://www.davidvillagelighting.co.uk)