

LA7949

SOURCE: <https://www.davidvillagelighting.co.uk/product/Prandina-Chorus-Pendant/15347>



PRODUCT DESCRIPTION

Chorus Pendant Light by Prandina

The Chorus pendant was designed in 2012 and is a simply elegant light that is versatile and functional. The lampshade is defined by its slightly angled lines produced from blowing white opal glass. The cylindrical shape is both inviting and intriguing as it looks different from various angles.

The Chorus pendant light will look good in a variety of settings due to the warm diffused glow that emanates from the shade. The pendant will particularly thrive in reception rooms, bedrooms, dining room and lounges both in domestic and commercial interiors. For a pendant light suited for a smaller space, check out the [Chorus Mini pendant light](#).

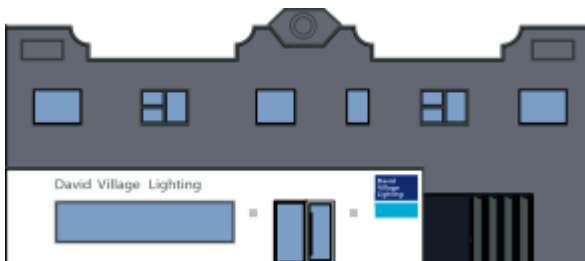
PRODUCT SPECIFICATION

Light Source: 1 x IAA E27 150W max (excluded)

IP Code: 20

Dimming: Dimmable via mains phase dimming

Dimensions: Ø36cm shade
33cm shade height
Ø12cm ceiling canopy
200cm cable length



For all sales and technical enquiries, please contact:

+44 (0)114 263 4266

info@davidvillagelighting.co.uk

www.davidvillagelighting.co.uk