

LA9625

SOURCE: <https://www.davidvillagelighting.co.uk/product/Prandina-Notte-Glass-Pendant/15340>



PRODUCT DESCRIPTION

Designer: Mengotti/Prandina

Notte Glass Pendant Light by Prandina

Designed in 2010, the Notte Glass pendant is part of the [Prandina Notte collection](#) and is the epitome of Prandina's style. Luxurious and refined the pendant is made from blown glass with a painted finish on the inside and on the outside to create contrast and warmth. The pendant light has a simple, sleek design with a domed shape and smooth lines which emits a downward glow. This makes the Notte pendant very versatile so it can be used in many domestic settings, particularly looking good when hung over tables.

The Notte Glass pendant light is available in 4 sizes and 6 finishes, allowing you to find the right fit for your space. You can also buy several to put in rows or mix and match to create a varied cluster that will look beautiful and stunning.

The Notte pendant light is also available in an LED integrated version. Please [click here](#) to find out more.

PRODUCT SPECIFICATION

Light Source: S1 - 1 x G9 75W max (excluded)
S3/S5/S7 - 1 x E27 150W max (excluded)

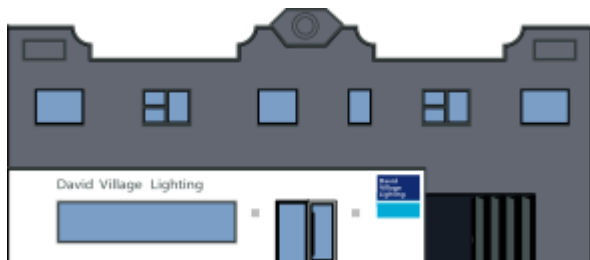
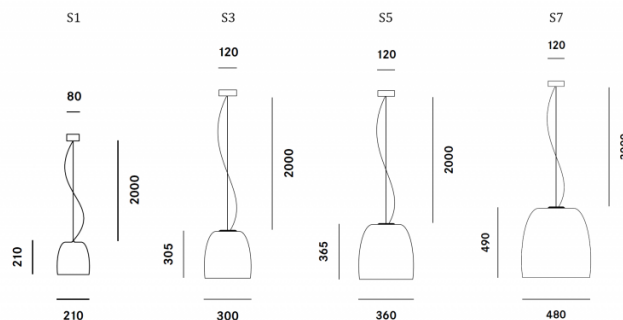
IP Code: 20

Dimming: Dimmable via mains phase dimming

Dimensions: S1 - Ø21cm, H 21cm
S3 - Ø30cm, H 30.5cm
S5 - Ø36cm, H 36.5cm
S7 - Ø48cm, H 49cm

S1 - Ø8cm ceiling rose
S3/S5/S7 - Ø12cm ceiling rose

S1/S3/S5 - 2m cable length
S7 - 3m cable length



For all sales and technical enquiries, please contact:

+44 (0)114 263 4266

info@davidvillagelighting.co.uk

www.davidvillagelighting.co.uk