



Tom Dixon Etch Web Pendant

LA7913

SOURCE: <https://www.davidvillagelighting.co.uk/product/Tom-Dixon-Etch-Web-Pendant/15279>



PRODUCT DESCRIPTION

Designer: Tom Dixon

Etch Web Pendant Light by Tom Dixon

The Etch Web pendant was originally designed for Audi A8 launch in Miami 2008. The Etch collection was designed and produced entirely digitally, using digital acid photo-etching techniques. The aim was to create a pendant which has volume but is lightweight at the same time, the Etch Web achieves just that.

An impressive pendant in a brass finish, which when lit creates an intrinsic set of shadows in its surroundings. The shadows and light are as playful as the natural light escaping the forest canopy.

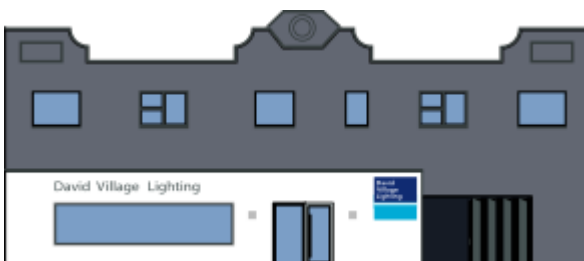
Please note, that to dim the lamp you need to install a dimmable bulb.

PRODUCT SPECIFICATION

- Light Source:** 1 x max 42W E27 (excluded)
OR
1 x max 8-11W E27 LED (excluded)
- IP Code:** 20
- Dimming:** Dimmable via mains phase dimming.
- Dimensions:** Width: 60cm
Height: 60cm
Cable Length: 250cm



60 / 23.6"



For all sales and technical enquiries, please contact:

+44 (0)114 263 4266

info@davidvillagelighting.co.uk

www.davidvillagelighting.co.uk