

FLOS

## Flos String Light Sphere LED Pendant

LA7343

SOURCE: <https://www.davidvillagelighting.co.uk/product/Flos-String-Light-Sphere-LED-Pendant/14549>

### PRODUCT DESCRIPTION

**Designer:** Michael Anastassiades

### String Light Sphere LED Pendant Lamp by Flos

The String LED lights were designed by Michael Anastassiades in 2014 for Flos and won the Homes & Gardens designer award. Inspired by the concept of dividing space architecturally, Anastassiades reveals his inspiration for his design from his train journeys, and the “beautiful and poetic” way the strings of “electrical wires connect the pylons but at the same time they divide the landscape”. Anastassiades’ designs move towards abstraction, in a search for purity that pursues an exercise of stripping away, taking objects and materials back their original dimension of bareness.

With a bold monochromatic aesthetic, the String light is modern and minimal, yet eye catching with the choice of either a black, blue or white coloured shade with a white polycarbonate diffuser. The String LED lights are designed to not be governed by where electricity points are situated in a room, giving the user the ability to take the light wherever they wish. This is achieved by purchasing alongside a ceiling/wall rose or floor switch, allowing for creative installation with unique and imaginative displays of light and cable in interior spaces.

The floor switch feeds up to two heads and has two layouts with space to wrap 10 metres of cable and allows you to switch the light on and off at the floor as well as dim the light at the lampshade. The wall/ceiling rose version feeds up to two heads and includes three layouts for the cable and can be installed anywhere on your ceiling or wall and is controlled by the mains with dimming capabilities at the shade.



## PRODUCT SPECIFICATION

**Light Source:** 21W, 2700K, 1345 lumens

**IP Code:** 20

**Dimming:** **Ceiling/Wall Rose** - Integrated dimmer on the product

**Floor Switch** - Integrated dimmer on the product and In line on/off switch included on cable

**Dimensions:** Ø19cm shade  
12m cable length

**Ceiling/Wall Rose:**

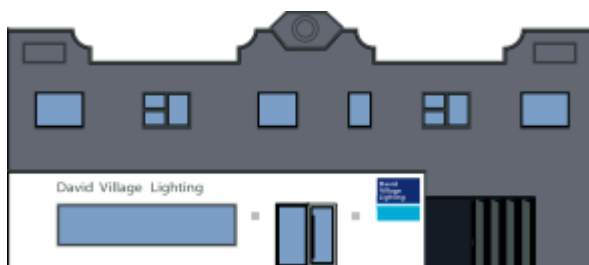
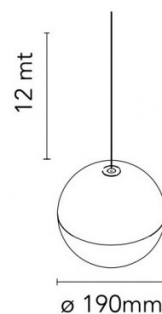
Ø11cm

5.5cm height

**Floor Switch:**

Ø10cm

16.5cm height



**For all sales and technical enquiries, please contact:**

+44 (0)114 263 4266

[info@davidvillagelighting.co.uk](mailto:info@davidvillagelighting.co.uk)

[www.davidvillagelighting.co.uk](http://www.davidvillagelighting.co.uk)