



# Zero Shibuya Table Lamp

LA7173

SOURCE: <https://www.davidvillagelighting.co.uk/product/Zero-Shibuya-Table-Lamp/14368>



## PRODUCT DESCRIPTION

**Designer:** Thomas Bernstrand

### Shibuya Table Lamp by Zero

Made from hand blown glass.

Painted grey aluminium base.

2.5 m cable with switch and plug

Also available with either a white or red base. Please contact us for more information.

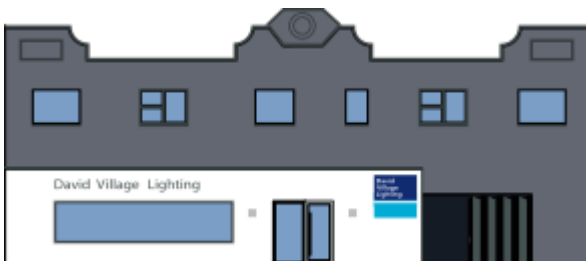
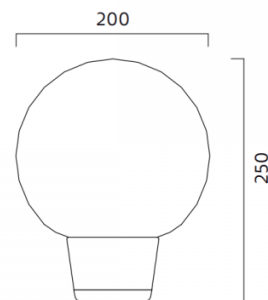
For further details, pricing and orders please [contact us](#).

## PRODUCT SPECIFICATION

**Light Source:** max 28W E27 (excluded)

**IP Code:** 20

**Dimensions:** 25 cm height  
Ø 20 cm  
250 cm cable length



**For all sales and technical enquiries, please contact:**

+44 (0)114 263 4266

[info@davidvillagelighting.co.uk](mailto:info@davidvillagelighting.co.uk)

[www.davidvillagelighting.co.uk](http://www.davidvillagelighting.co.uk)