

**FOSCARINI**

**Foscarini Plass LED Pendant**

LA6091/LED

SOURCE: <https://www.davidvillagelighting.co.uk/product/Foscarini-Plass-LED-Pendant/14064>



**PRODUCT DESCRIPTION**

Designer: Luca Nichetto

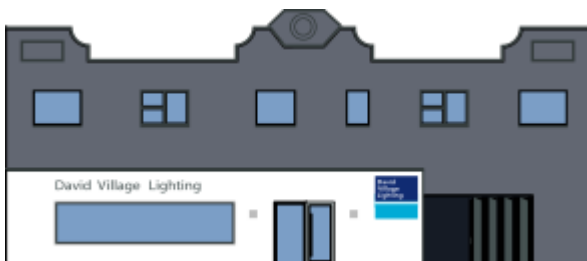
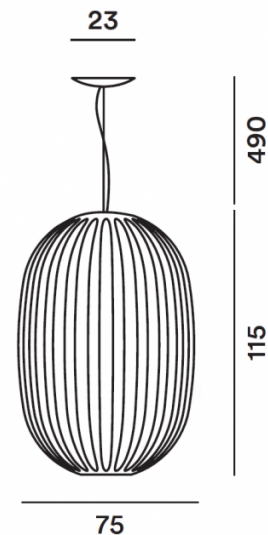
**Plass LED Pendant Light by Foscarini**

The Plass LED pendant light is the larger size of the [Plass pendant](#), which is fitted with an integrated LED light source and provided with a LED retrofit light bulb to produce a strong, effective glow. The pendant was designed by Luca Nichetto in 2011 and interprets the traditional process of Italian glass making by using modern technology to form a plastic lampshade.

The shade resembles glass but is updated, with the plastic producing unique irregularities which make the Plass LED pendant a stunning, stylish and personalised light. Available in a chic light blue or grey, this pendant light can be used in many settings, with its large size making it perfect for big spaces and high ceilings. Use in homes, offices or commercial settings to make an impact and to bring a touch of contemporary style to your interior.

**PRODUCT SPECIFICATION**

- Light** 1 x E27 PAR 30 LED retrofit 9.5W, 2700K, 650 lumens (included by Foscarini)
- Source:** lumens (included by Foscarini)
- IP Code:** 20
- Dimensions:** Ø75cm shade  
115cm shade height  
Ø23cm ceiling rose  
490cm drop



**For all sales and technical enquiries, please contact:**

+44 (0)114 263 4266

info@davidvillagelighting.co.uk

www.davidvillagelighting.co.uk