



# &Tradition Spinning BH1 Pendant

LA6958

SOURCE: <https://www.davidvillagelighting.co.uk/product/Tradition-Spinning-BH1-Pendant/14016>



## PRODUCT DESCRIPTION

Designer: Benjamin Hubert

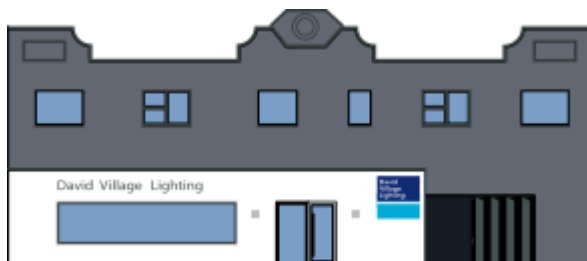
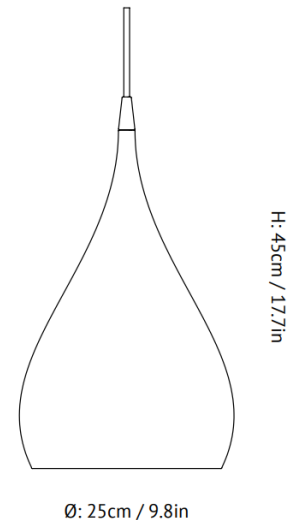
### Spinning BH1 Pendant Light by &Tradition

Taking inspiration from a spinning top toy, designer Benjamin Hubert has released the Spinning BH1 pendant, a stylish and modern light that will impress. The Spinning pendant also gets its name from the technique used to make it—metal spinning—and is made from spun aluminium, being both delicate and durable.

The Spinning BH1 pendant light is characterised by its curved lines and sleek form; a chic addition to your space. This pendant is suitable for home and work settings and can be effective either as a stand-alone light or part of a series or cluster of lights, perfect for many spaces. You can also pair with a bigger size, the [Spinning BH2 pendant light](#) to create variety within the same design aesthetic.

## PRODUCT SPECIFICATION

- Light Source:** 1 x Max 8.5W LED E27 (excluded)
- IP Code:** 20
- Dimming:** Dimmable via mains phase dimming.
- Dimensions:** Ø25cm  
Height: 45cm  
Cable Length: 4m



For all sales and technical enquiries, please contact:

+44 (0)114 263 4266

[info@davidvillagelighting.co.uk](mailto:info@davidvillagelighting.co.uk)

[www.davidvillagelighting.co.uk](http://www.davidvillagelighting.co.uk)