



# &Tradition Bellevue AJ8 Table Lamp

LA6945

SOURCE: <https://www.davidvillagelighting.co.uk/product/Tradition-Bellevue-AJ8-Table-Lamp/14000>



## PRODUCT DESCRIPTION

**Designer:** Arne Jacobsen

### Bellevue AJ8 Table Lamp by &Tradition

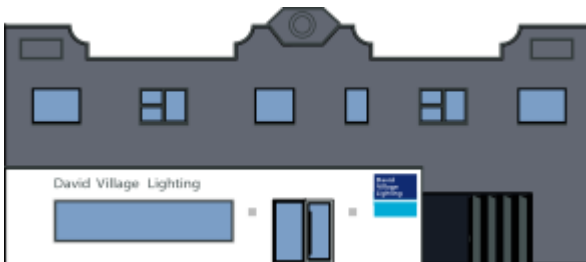
Part of Arne Jacobsen's Bellevue collection – recently reissued by &Tradition – the Bellevue AJ8 is an instantly recognisable table lamp and an early example of the design principles that would go on to define the Danish Modernist movement.

Originally designed for Jacobsen's 1929 'Fremtidens Hus', a concept house intended to present an optimistic view of the future (complete with shoe-cleaning doormat and speedboat garage), Bellevue is a testament to the power of simple design, a functional yet nonetheless beautiful table lamp with a unique spun-metal shade and an adjustable neck, perfect for reading, working, chatting, or even just admiring.

Create a consistent design scheme by incorporating other members of the Bellevue family, including the [AJ7 Floor Lamp](#) and [AJ9 Wall Lamp](#).

## PRODUCT SPECIFICATION

- Light Source:** 1 x max 25W E14 (excluded)
- IP Code:** 20
- Dimming:** Integrated on/off switch on the product
- Dimensions:** Ø16.7cm shade  
42cm height  
Ø17.5cm base  
2m cable length



**For all sales and technical enquiries, please contact:**

+44 (0)114 263 4266

[info@davidvillagelighting.co.uk](mailto:info@davidvillagelighting.co.uk)

[www.davidvillagelighting.co.uk](http://www.davidvillagelighting.co.uk)