



# Gubi Turbo Pendant

LA6699

SOURCE: <https://www.davidvillagelighting.co.uk/product/Gubi-Turbo-Pendant/13632>



## PRODUCT DESCRIPTION

**Designer:** Louis Weisdorf

### Turbo Pendant Light by Gubi

Created in 1965, the Turbo pendant light was designed by Louis Weisdorf. Influenced by the thin, airy nature of Japanese rice paper, the Turbo light is made up of 12 aluminium spiral lamellae that create a cascading petal-like globe that is both stunning and delicate. The nature of the design means the light bulb is completely hidden, creating a subtle diffused light.

Available in two sizes, the Turbo pendant works in a variety of settings to create an impact and is visually striking to all that come across it. To create the ultimate impact, buy several of both sizes to cluster together to both stun and amaze.

## PRODUCT SPECIFICATION

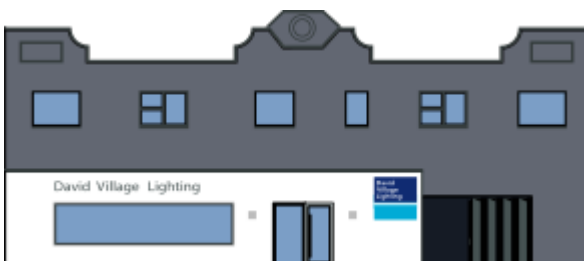
**Light Source:** Small - 1 x max 10W E27 LED (excluded)  
Large - 1 x max 12W E27 LED (excluded)

**IP Code:** 20

**Dimming:** Dimmable via mains phase dimming

**Dimensions:** Small - Ø36cm  
Large - Ø62cm

380cm approx. exposed cable length  
400cm approx. total cable length



**For all sales and technical enquiries, please contact:**

+44 (0)114 263 4266

info@davidvillagelighting.co.uk

www.davidvillagelighting.co.uk