

kdl*n*

KDLN Louis Ceiling Light

LA6494

SOURCE: <https://www.davidvillagelighting.co.uk/product/KDLN-Louis-Ceiling-Light/13358>



PRODUCT DESCRIPTION

Designer: Studio 14

KDLN Louis Ceiling Light

This ceiling light by KDLN was designed by Studio 14 and was inspired by the legendary jazz musician Louis Armstrong. The shape of this minimalist shade is reminiscent of the shape of a trumpet, a staple in the world of jazz music. This connection between light and music creates amazing compositions that, when clustered together, create a ceiling of impressive lights. The height of these ceiling lights can together form interesting clusters of undulating shades, reflecting the undulating beats of jazz music.

Place these lights above your workspace or living area to create a design statement. These KDLN Louis ceiling lights emit a bright effective light that will fill a room. The polyethylene shade has a large Ø60cm surface area that allows for a large beam of downward light, perfect for any space!

PRODUCT SPECIFICATION

Light Source: 1 x Max 30W E27 (excluded)

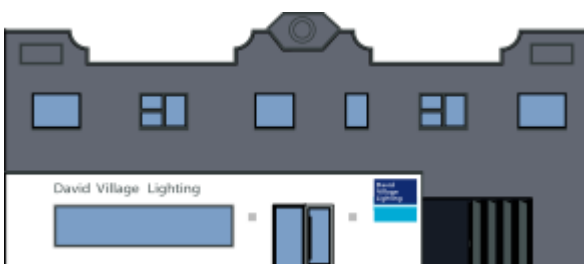
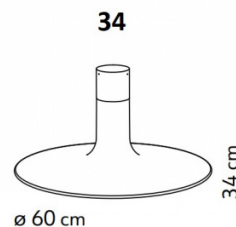
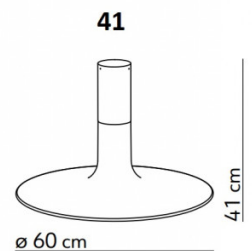
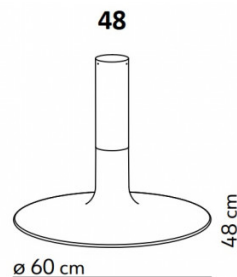
IP Code: 20

Dimming: Dimmable via mains phase dimming.

Dimensions: **34:**
Ø60cm
Height: 34cm

41:
Ø60cm
Height: 41cm

48:
Ø60cm
48cm height



For all sales and technical enquiries, please contact:

+44 (0)114 263 4266

info@davidvillagelighting.co.uk

www.davidvillagelighting.co.uk