

FLOS

Flos Tatou Floor Lamp

LA6218

SOURCE: <https://www.davidvillagelighting.co.uk/product/Flos-Tatou-Floor-Lamp/13036>



PRODUCT DESCRIPTION

Designer: Patricia Urquiola

Tatou Floor Lamp by Flos

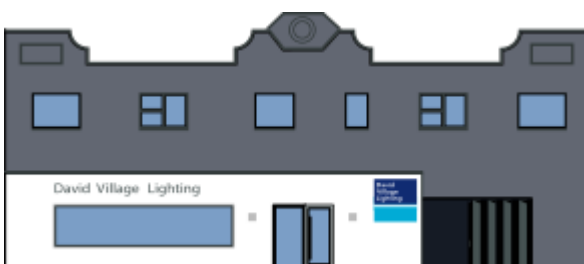
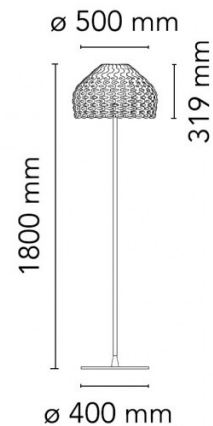
With its distinctive shell like shade, the Tatou collection of lighting designs by Patricia Urquiola was inspired by classic Japanese armour. Tatou derives its name from the French word for armadillo and its influence can be seen in the intricate lattice diffuser which provides a soft light.

The Tatou series includes this floor lamp, and also a [pendant](#) available in two sizes and a [table lamp](#). The rest of the range be used in conjunction to the Tatou floor light to create a harmonic feel or the Tatou lights work equally as well as a stand alone piece due to their decorative and stylish style.

Available in two colours, ochre grey or white, the Tatou floor lamp provides a warm ambience and sits comfortable in a variety of environments including living rooms, conservatories, bedrooms and studies.

PRODUCT SPECIFICATION

- Light Source:** 1 x max 21W LED E27 (excluded)
- IP Code:** 20
- Dimming:** In line dimmer included on cable
- Dimensions:**
 - Ø50cm shade
 - 31.9cm shade height
 - 180cm height
 - Ø40cm base
 - 170cm cable length



For all sales and technical enquiries, please contact:

+44 (0)114 263 4266

info@davidvillagelighting.co.uk

www.davidvillagelighting.co.uk