

a-emotional light

a-emotional light Cors Wall Light

LA6134

SOURCE: <https://www.davidvillagelighting.co.uk/product/a-emotional-light-Cors-Wall-Light/12844>



PRODUCT DESCRIPTION

Designer: Arturo Alvarez

a-emotional light Cors Wall Light

The Cors Wall Light is a tribute to femininity and the female form, a theme that is synonymous with designer Arturo Alvarez. The organic-looking structure of the pendant is created using SIMETECH®, a mesh made from steel and silicone. SIMETECH® is easy to fold, cut, and mould into its desired shape, and is also durable and easy to keep clean with a damp cloth. Each shade is handmade in Spain.

The Cors Wall Light casts a gentle light onto the wall it sits on, surrounding the lampshade in a warm glow. The horizontal folds throughout the shade illuminate parts of the shade while casting others in shadow. The Cors wall light is perfect for creating ambient lighting in bedrooms or living rooms, or installed in a row to illuminate hallways.

PRODUCT SPECIFICATION

Light Source: 2 x Max 4W LED G9 (excluded)

IP Code: 20

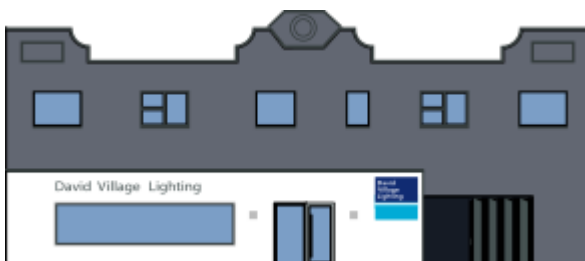
Dimming: Dimmable via mains phase dimming.

Dimensions: Height: 43cm
Width: 30cm
Depth: 13cm

30cm | 11,8in

43cm | 16,9in

13cm | 5,1in



For all sales and technical enquiries, please contact:

+44 (0)114 263 4266

info@davidvillagelighting.co.uk

www.davidvillagelighting.co.uk