

a·emotional light

# a-emotional light Gea Wall Light

LA6128

SOURCE: <https://www.davidvillagelighting.co.uk/product/a-emotional-light-Gea-Wall-Light/12831>

## PRODUCT DESCRIPTION

**Designer:** Arturo Alvarez

### a-emotional light Gea Wall Light

Designed by Arturo Alvarez, The Gea Wall Light is inspired by Gaia - the primordial goddess, Mother Earth. The subtle curves which make up the shape of the shade represent femininity and elegance. Each light is handmade in Spain from SIMETECH®, a mesh made from stainless steel and silicone which is durable and easy to clean. As these lamps are handmade, each shade will vary slightly - ensuring you have a truly unique piece.

The light emitted from the Gea Wall light is evenly diffused through the shade, creating a warm glow. The lamp also casts upward and downward directional light against the wall, creating a soothing ambiance. This ambient light along with the sleek and elegant shape of the shade helps the light fit seamlessly into a range of spaces and various decors. The Gea Wall Light is part of [The Gea Collection](#). The main piece from this collection, The Gea Floor Lamp, won a Good Design Award in 2007.

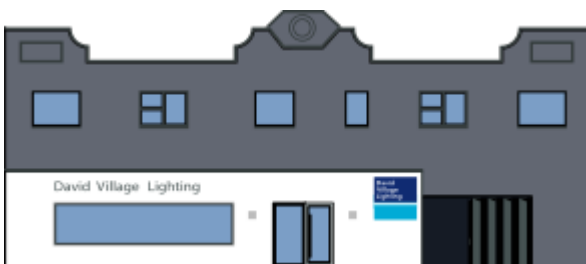


## PRODUCT SPECIFICATION

**Light Source:** 2 x Max 4W LED G9 or 33W G9 (excluded)

**IP Code:** 20

**Dimensions:** Height: 26cm  
Width: 16cm  
Depth: 13cm



**For all sales and technical enquiries, please contact:**

+44 (0)114 263 4266

[info@davidvillagelighting.co.uk](mailto:info@davidvillagelighting.co.uk)

[www.davidvillagelighting.co.uk](http://www.davidvillagelighting.co.uk)