

VIBIA

Vibia Halo Circular 2332 Triple LED Suspension Light

LA6077

SOURCE: <https://www.davidvillagelighting.co.uk/product/Vibia-Halo-Circular-2332-Triple-LED-Suspension-Light/12682>



PRODUCT DESCRIPTION

Designer: Martín Azúa

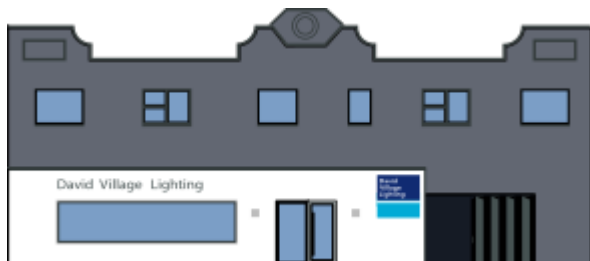
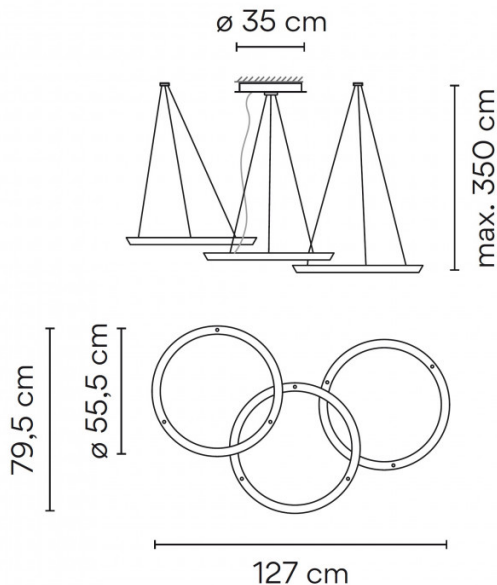
Vibia Halo 2332 Triple LED Suspension Light

The Halo 2332 Circular pendant was designed by Martín Azúa and is part of the [Vibia Halo collection](#). Made up of three circular PMMA shades, this suspension creates a luminous glow, truly embodying the look of an angel's halo.

The size of the Halo 2332 makes this pendant lamp perfect for use as a main light, creating a charming and alluring aesthetic in any space. This suspension light can be used in homes, workspaces and hospitality settings for an effective overall illumination, working best in larger rooms or hung over tables. You can also match the pendant with other lights from the Halo range to create a stunning feature.

PRODUCT SPECIFICATION

- Light Source:** 23W, 3000K, 6258 Lumens
- IP Code:** 20
- Dimming:** Dimmable via 1-10V dimming systems. Please consult your electrician, additional wiring may be required on site.
- Dimensions:** Shades: Ø55.5cm
 Width: 79.5cm
 Length: 127cm
 Ceiling Canopy: Ø30.5cm
 Maximum Drop: 350cm



For all sales and technical enquiries, please contact:

+44 (0)114 263 4266

info@davidvillagelighting.co.uk

www.davidvillagelighting.co.uk