

Artemide

# Artemide Mesmeri LED Wall Light

LA6040/C

SOURCE: <https://www.davidvillagelighting.co.uk/product/Artemide-Mesmeri-LED-Wall-Light/12584>



## PRODUCT DESCRIPTION

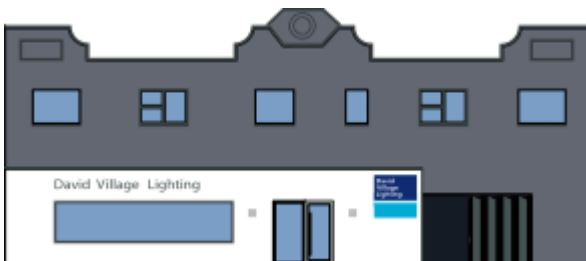
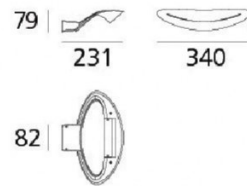
Designer: Eric Sole

### Mesmeri LED by Artemide

The Mesmeri wall light design earned Eric Sole, the designer, the iF Product Design and Red Dot Design Awards in 2006 and the Good Design Award in 2007. Sole had an interest in exploring the continuous evolution of the raw material available for his designs. His belief was that a lamp should be a living object, one that would speak out to you, enlighten and comfort you when it gets dark. The Mesmeri LED light has a sinuous, curving body, made from a single piece of aluminium cleverly enveloping the light source. Emitting an indirect light, the Mesmeri is available in two colour options, and you can further select the colour temperature (2700K or 3000K). The fitting is also available as [halogen/retrofit](#) wall light and is only available in a white colour.

## PRODUCT SPECIFICATION

- Light Source:** Warmest White - 28W, 2700K, 2450 lumens  
Warm White - 28W, 3000K, 2622 lumens
- IP Code:** 20
- Dimming:** Push to make/ switch dimming, dimmable using push to make switches. Please consult your electrician, additional wiring may be required on site.
- Dimensions:** 34 cm width  
23.1 cm depth  
7.9 cm height



For all sales and technical enquiries, please contact:

+44 (0)114 263 4266

[info@davidvillagelighting.co.uk](mailto:info@davidvillagelighting.co.uk)

[www.davidvillagelighting.co.uk](http://www.davidvillagelighting.co.uk)