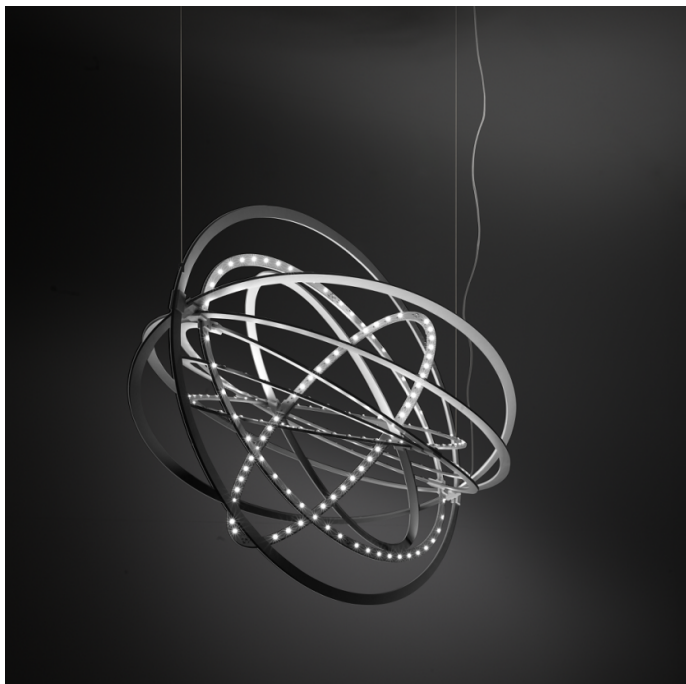


Artemide

Artemide Copernico LED Suspension Light

LA9592-

SOURCE: <https://www.davidvillagelighting.co.uk/product/Artemide-Copernico-LED-Suspension-Light/12332>



PRODUCT DESCRIPTION

Designer: Carlotta de Bevilacqua, P. Dell'Elce

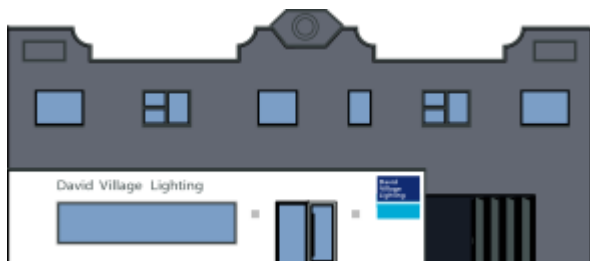
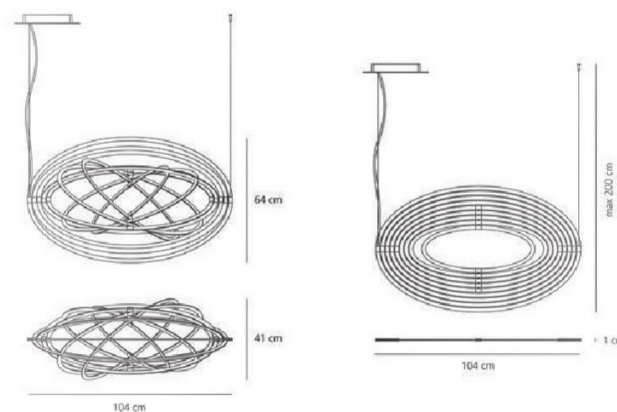
Copernico by Artemide

Copernico was designed by Carlotta de Bevilacqua for Italian brand, Artemide. Copernico has 9 concentric ellipses that are laser-cut from a single sheet of anodised aluminium. The ellipses are connected via copper contacts which allows you to rotate each one independently. This way, you can create your own configuration and easily change it depending on the light emission you need for the space.

The aluminium plate supports a system of 384 white LED lights; the low voltage lights further assist the simplicity for the user to move and adjust the modular elements. When the Copernico suspension light is closed and all ellipses are aligned, the light becomes completely flat.

PRODUCT SPECIFICATION

Light Source:	30W, 3000K, 3900 lumens
IP Code:	20
Dimming:	Dimmable with Push dimming systems only. Please consult your electrician, additional wiring may be required on site.
Dimensions:	104 cm width 41 cm height 200 cm cord length



For all sales and technical enquiries, please contact:

+44 (0)114 263 4266

info@davidvillagelighting.co.uk

www.davidvillagelighting.co.uk