



# Tom Dixon Etch Pendant

LA9850

SOURCE: <https://www.davidvillagelighting.co.uk/product/Tom-Dixon-Etch-Pendant/11541>



## PRODUCT DESCRIPTION

Designer: Tom Dixon

### Tom Dixon Etch Pendant

A geodesic design of refined taste, the Etch pendant was inspired by mathematics while its design resembles the old Victorian tin toys. The thin metal surface is digitally acid-etched and lightly perforated to allow for light to escape, creating a tangled set of shadows.

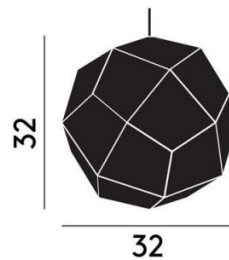
You can create your own cluster of Etch pendants, using various finish options and/or sizes as the Etch is also available in a larger version, [Etch 50 cm - Brass](#).

**Please note, that to dim the lamp you need to install a dimmable bulb.**

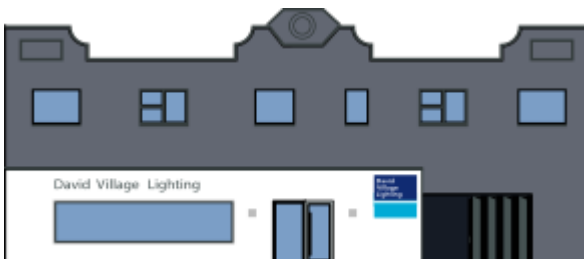
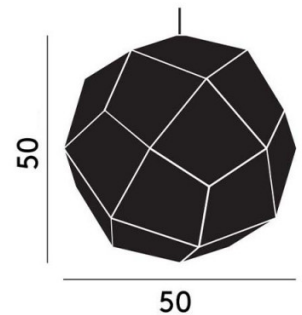
## PRODUCT SPECIFICATION

- Light Source:** 1 x max 42W E27 (excluded)  
OR  
1 x max 8-11W E27 LED (excluded)
- IP Code:** 20
- Dimming:** Dimmable via mains phase dimming.
- Dimensions:** Width: 32cm  
Height: 32cm  
Cable Length: 250cm

Small:



Large:



**For all sales and technical enquiries, please contact:**

+44 (0)114 263 4266

[info@davidvillagelighting.co.uk](mailto:info@davidvillagelighting.co.uk)

[www.davidvillagelighting.co.uk](http://www.davidvillagelighting.co.uk)