

Artemide

Artemide Edge Wall / Ceiling
Light

LA9512

SOURCE: <https://www.davidvillagelighting.co.uk/product/Artemide-Edge-Wall-Ceiling-Light/10523>



PRODUCT DESCRIPTION

Designer: Alessandro Mendini

Artemide Edge Wall / Ceiling Light

Made from a white thermoplastic material, the cube is designated as such to be used both in interior and exterior settings (IP65). Edge was designed by Alessandro Mendini for Artemide and is a playful design for both wall or ceiling installations. At the same time, usability is further enhanced by how simple it is to change the light bulb: simply by unscrewing the diffuser from the base. Available in two sizes, the Edge 21 and Edge 30, the light has a white technopolymer diffuser. Edge light emits a soft and diffused light, uniformly lighting the space around it.

PRODUCT SPECIFICATION

Light Source: 1 x 8W LED E27(excluded)

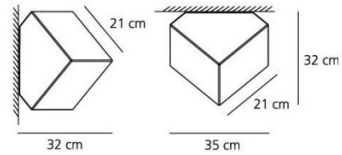
IP Code: 65

Dimming: Dimmable via mains phase dimming.

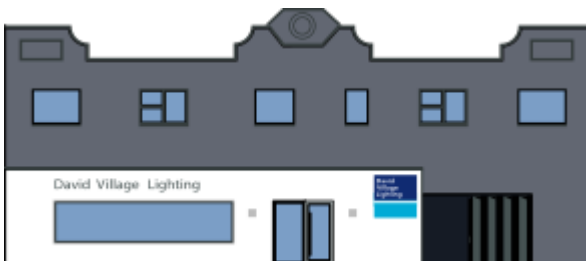
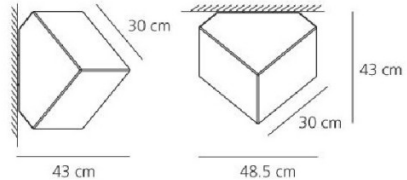
Dimensions: **Edge 21:**
35 cm width
21 cm edge length
32 cm depth

Edge 30:
48.5 cm width
30 cm edge length
43 cm depth

Edge 21



Edge 30



For all sales and technical enquiries, please contact:

+44 (0)114 263 4266

info@davidvillagelighting.co.uk

www.davidvillagelighting.co.uk