

**CLEARANCE
OFFERS**

**Flos Tatou Pendant
CLEARANCE**

LA6219/CLEARANCE

SOURCE: <https://www.davidvillagelighting.co.uk/product/Flos-Tatou-Pendant-CLEARANCE/10002314>



PRODUCT DESCRIPTION

Designer: Patricia Urquiola

Flos Tatou Pendant Light

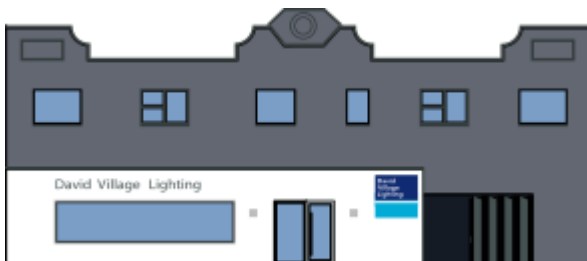
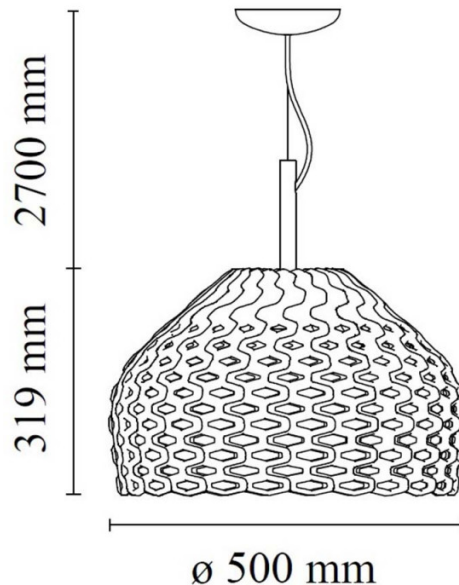
**BRAND NEW, OVERSTOCKED, ORIGINAL PACKAGING.
1 x White Available.**

Named after the French word for armadillo, the Tatou collection of lights by designer Patricia Urquiola is inspired by classic antique Japanese armour. Like the armadillo and its protective leather shell, the Tatou offers a polycarbonate encased pendant providing diffused light.

The latticed polycarbonate shade of the Tatou pendant light is intricately designed and produces a show of shadows and light on the surrounding walls. The shade is made up of four identical polycarbonate elements, all interwoven to form a unified dome shape which diffuses light both up and down.

PRODUCT SPECIFICATION

- Light Source:** 1 x Max 21W LED E27 (excluded)
- IP Code:** 20
- Dimming:** Dimmable via mains phase dimming.
- Dimensions:** Ø50cm
Height: 31.9cm
Cable Length: 270cm



For all sales and technical enquiries, please contact:

+44 (0)114 263 4266

info@davidvillagelighting.co.uk

www.davidvillagelighting.co.uk