

# Ferm Living Collect Brass Pendant Dome

LA5088/B

SOURCE: <https://www.davidvillagelighting.co.uk/product/Ferm-Living-Collect-Brass-Pendant-Dome/10002275>



## PRODUCT DESCRIPTION

### Ferm Living Collect Brass Pendant Dome

A refined addition to the Collect Lighting series, the Ferm Living Collect Brass Dome Pendant blends timeless sophistication with modern versatility. Its large, dome-shaped brass shade brings a warm, elegant presence to contemporary interiors, while the powder-coated metal socket, available in a range of finishes, allows for a personalised aesthetic.

Perfect for illuminating dining tables, kitchen islands, or hallways, this pendant delivers a soft, ambient glow. It comes with a 3-metre fabric cord, a coordinating ceiling canopy, and a decorative metal ring for a polished finish. The dimmable function lets you tailor the lighting to suit any setting.

Please note, this product is also available in different shade colours as a [Low Socket](#) version and a [High Socket](#) version.

## PRODUCT SPECIFICATION

**Light Source:** 1 x Max 13W LED E27 (Excluded)

**IP Code:** 20

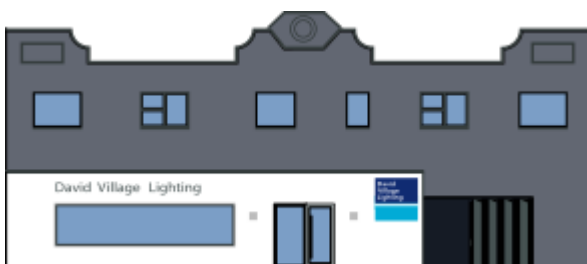
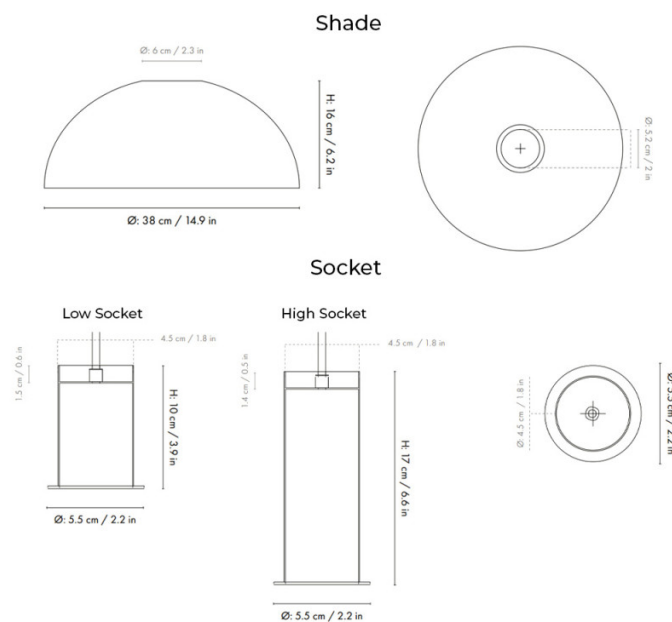
**Dimming:** Dimmable via mains phase dimming.

**Dimensions: Low Socket:**  
Socket Height: 10cm  
Socket: Ø5.5cm

**High Socket:**  
Socket Height: 17cm  
Socket: Ø5.5cm

Shade Height: 16cm  
Shade: Ø38cm

Cable Length: 300cm



For all sales and technical enquiries, please contact:

+44 (0)114 263 4266

[info@davidvillagelighting.co.uk](mailto:info@davidvillagelighting.co.uk)

[www.davidvillagelighting.co.uk](http://www.davidvillagelighting.co.uk)