

Tom Raffield

Tom Raffield Gwenen Pendant

LA11167

SOURCE: <https://www.davidvillagelighting.co.uk/product/Tom-Raffield-Gwenen-Pendant/10002195>

PRODUCT DESCRIPTION

Designer: Tom Raffield

Tom Raffield Gwenen Pendant

Tom Raffield designed the Gwenen Pendant for his Cornish-based studio. This studio focuses on sustainability and its responsibility as a brand to contribute towards the well-being of our planet. Each choice of timber is sustainably sourced and expertly crafted into pieces that will last a lifetime. The ringed configurations of wood that make up the Gwenen Pendant are created through a process of steam-bending. This is a low-energy, low-wastage method that bends solid wood beyond a seemingly possible point. When illuminated, light is reflected against the rings of wood, creating a display of light and shadows on adjacent walls. The open bottom allows for a downward directional light that fills the room with light.



The Gwenen Pendant is a mesmerising fusion of expert craftsmanship and nature-inspired design. It is available in a choice of ash, oak, or walnut, which weaves together to create an exquisite lighting centerpiece. Ash, the lighter of the three, is an incredibly tough hardwood that becomes supple and versatile when steam-bent. Its appearance varies in tone, grain, and colour from one tree to another, making each piece created completely unique. Oak is a popular choice for lighting and furniture within the home, and its light, warm hues blend seamlessly into a range of interiors. Walnut is the darkest of the three with rich, chocolatey tones that exude luxury. In large spaces, display the three finishes in multiples against a bold-painted wall to create a striking contrast of colours in a stunning maximalist display. Alternatively, hang a single Gwenen Pendant above a dining table or desk to create a focal point in the room.

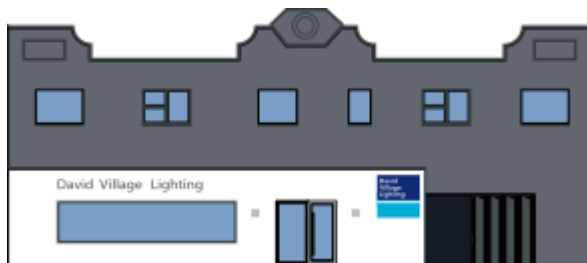
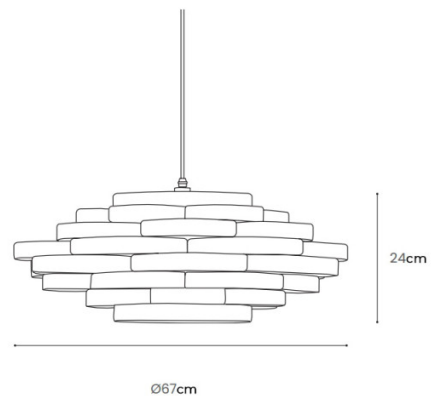
PRODUCT SPECIFICATION

Light Source: 1 x Max 25 E27 LED (Excluded)

IP Code: 20

Dimming: Dimmable using trailing edge dimming.

Dimensions: Ø67cm
Height: 24cm
Cable Length: 200cm



For all sales and technical enquiries, please contact:

+44 (0)114 263 4266

info@davidvillagelighting.co.uk

www.davidvillagelighting.co.uk