

Tom Raffield

Tom Raffield Arame Pendant

LA11160

SOURCE: <https://www.davidvillagelighting.co.uk/product/Tom-Raffield-Arame-Pendant/10002178>

PRODUCT DESCRIPTION

Designer: Tom Raffield

Tom Raffield Arame Pendant

Tom Raffield designed the Arame Pendant, it's geometric, sequential patterns of each pendant are synonymous with his designs and are a gorgeous showcase of what is possible through the process of steam-bending wood. Steam-bending wood has been an essential craft throughout history, often used when shaping the hull of a boat or the waist of a violin. Although this technique is not often used in large commercial projects, Tom Raffield utilises this ancient craft to create low-energy, ecological products that are low on wastage and free from any glues.

The Arame Pendant is available in two sizes, in an ash or walnut finish. Ash, the lighter of the two, produces an intense glow and will gradually darken over time, while walnut is a much darker finish and will turn a rich golden colour when illuminated. When lit, an abundance of light is diffused from the core, while the steam-bent structure creates a play of shadows against the surrounding walls and ceiling. Whether illuminated or not, the Arame Pendant is an elegant addition to any home. They can be installed individually or together, using the contrast of colours to create a captivating display. In the home, hang in the bedroom or lounge to add a welcoming ambience. In commercial spaces, the Arame Pendant blends seamlessly into cafes and bars with wooden cladding or natural decor.

Please Note: This pendant light is supplied with a brass socket and ceiling canopy with a black cable as standard. Other options are available, please [contact us](#) for more information and pricing.



PRODUCT SPECIFICATION

Light Source: 1 x Max 25W E27 LED (Excluded)

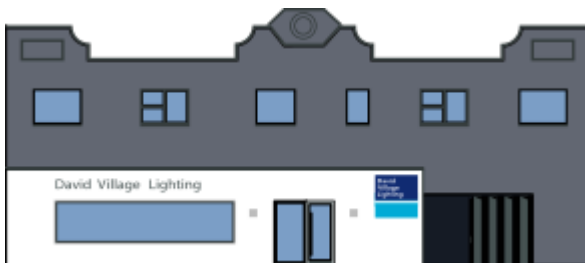
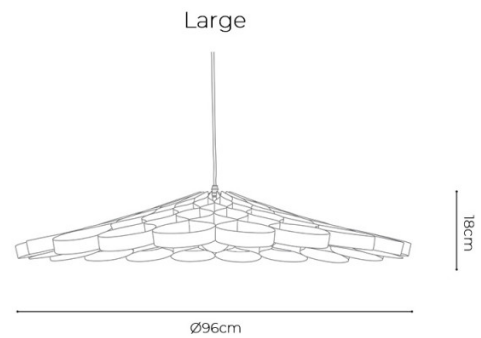
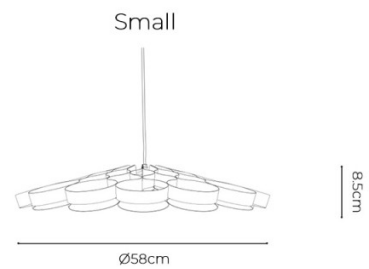
IP Code: 20

Dimming: Dimmable using trailing edge dimming.

Dimensions: Small:
Ø58cm
Height: 8.5cm

Large:
Ø96cm
Height: 18cm

Cable Length: 200cm



For all sales and technical enquiries, please contact:

+44 (0)114 263 4266

info@davidvillagelighting.co.uk

www.davidvillagelighting.co.uk