

CLEARANCE
OFFERS

LA3734/P/CLEAR

Kartell Planet LED Pendant CLEARANCE EX-DISPLAY

SOURCE: <https://www.davidvillagelighting.co.uk/product/Kartell-Planet-LED-Pendant-CLEARANCE-EX-DISPLAY/10002123>



PRODUCT DESCRIPTION

Kartell Planet Pendant Light

EX-DISPLAY, MINOR SIGNS OF WEAR AND TEAR. SEE IMAGES FOR EXACT CONDITION.

FEATURES A REDUCED LED LIFETIME.

BOXED IN B-GRADE NON-ORIGINAL PACKAGING.

1 x Crystal Available.

A feature light that is instantly recognisable by its spherical diffuser and crystal illusion design, the Planet Pendant Light by Kartell was designed by Tokujin Yoshioka as part of the [Planet collection](#).

With an adjustable cable and available in three colours, yellow, crystal and smoke, the Planet Pendant can be used as a stand-out centrepiece light, working best in a dining space or lounge area. Purchase either a single pendant to have a simple yet striking effect or buy several to create a clustered and extravagant light feature to produce an exuberant design scheme in your room.

PRODUCT SPECIFICATION

Light Source: 22W, 2700K, 1570 Lumens

IP Code: 20

Dimming: Non-Dimmable.

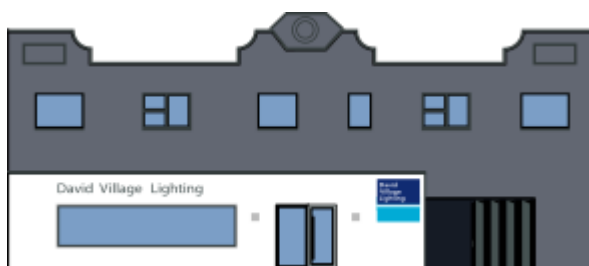
Dimensions: Shade: Ø33cm
Shade Height: 27cm
Cable Length: 170cm

27 cm



31 cm

David
Village
Lighting



For all sales and technical enquiries, please contact:

+44 (0)114 263 4266

info@davidvillagelighting.co.uk

www.davidvillagelighting.co.uk