



Luceplan J-us LED Pendant

LA11132

SOURCE: <https://www.davidvillagelighting.co.uk/product/Luceplan-J-us-LED-Pendant/10002111>

PRODUCT DESCRIPTION

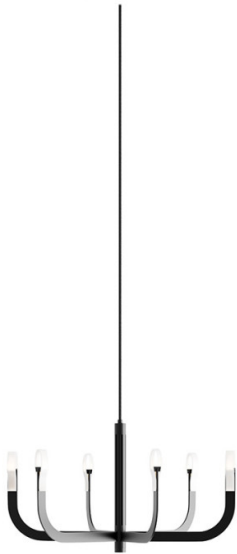
Designer: Alessandro Zambelli

Luceplan J-us LED Pendant

The Luceplan J-us Pendant was designed by Italian innovator Alessandro Zambelli. Zambelli is known for his off-beat and 'art-like' designs which reflect his passion for new technology and materials. The J-us Pendant perfectly encapsulates this style. It is a reinterpretation of the classic chandelier, introducing new technology that allows all power cables to be hidden from view, this gives the pendant a sleek and contemporary profile while maintaining an aura of gentility.

The J-us Pendant features a central cylinder that acts as an electrified track that accommodates the chandelier arms. The arms, which can be arranged in a vast variety of configurations, are made using a material usually utilised in making electrical circuits, allowing the current to flow through them. The integral LEDs offer a warm and enveloping light, reminiscent of the glow from candlelight. The eye-catching and captivating design of The J-us makes it perfect to be installed over a dining room table. The J-us has been selected by the ADI Osservatorio Permanente del Design for publication in the ADI Design Index 2024, putting it in the running for the 2026 Compasso d'Oro awards.

The J-us Pendant is available in a Matt Black and Satin Gold finish. Due to the possibility of arranging multiple levels of arms to the central structure, a range of configurations are available. Please [contact us](#) for more details.



PRODUCT SPECIFICATION

Light Source: **Configuration A:** 21W, 2700K, 840 Lumens
Configuration C: 21W, 2700K, 840 Lumens
Configuration E: 33W, 2700K, 1400 Lumens
Configuration G: 57W, 2700K, 2520 Lumens

IP Code: 20

Dimming: Dimmable via mains phase dimming.

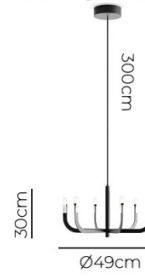
Dimensions: **Configuration A:**
Ø49cm
Height: 30cm
Cable Length: 300cm

Configuration C:
Ø92cm
Height: 54cm
Cable Length: 300cm

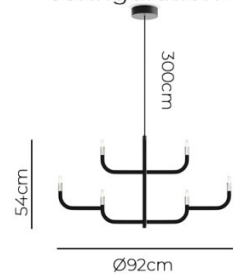
Configuration E:
Ø49cm
Height: 54cm
Cable Length: 300cm

Configuration G:
Ø92cm
Height: 54cm
Cable Length: 300cm

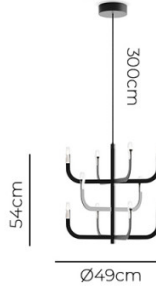
Configuration A



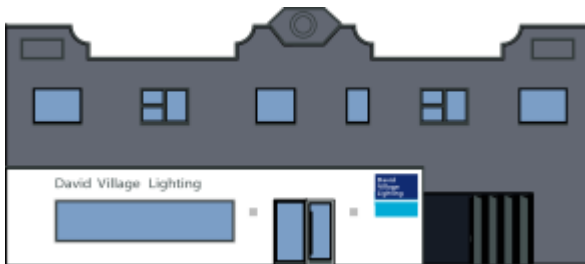
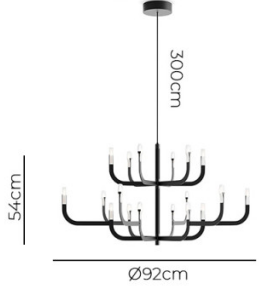
Configuration C



Configuration E



Configuration G



For all sales and technical enquiries, please contact:

+44 (0)114 263 4266

info@davidvillagelighting.co.uk

www.davidvillagelighting.co.uk