



# Case Solid LED Portable Table Lamp

LA11115

SOURCE: <https://www.davidvillagelighting.co.uk/product/Case-Solid-LED-Portable-Table-Lamp/10002080>

## PRODUCT DESCRIPTION

**Designer:** Terence Woodgate

### Case Solid LED Portable Table Lamp

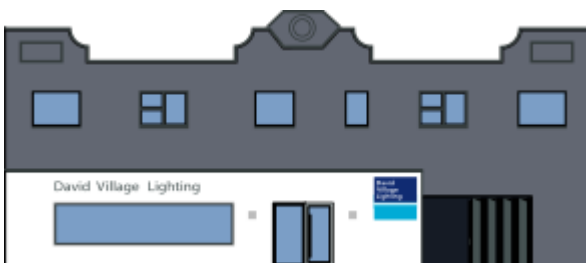
The Solid Portable Table Lamp is adapted from Terence Woodgate's [Solid Table Lamp](#). This design shares the same characteristics as the Solid Lamp, a cylindrical marble base topped with hand-blown, acid-etched glass. However, this rechargeable lamp is free from any cables. The battery time will last between 8 - 12 hours, depending on brightness levels.

The sleek design of the Solid Portable is typical of Woodgate's minimalistic style. The solid base conceals a replaceable quick-fit battery and a three-stage touch dimmer. The opal glass shade diffuses light, providing a warm glow wherever you use it. With a rating of IP44, The Case Solid Portable is suitable for both indoor and outdoor use, making it perfect for providing ambient lighting on bedside tables or illuminating an outdoor dining table.



## PRODUCT SPECIFICATION

- Light Source:** 9W, 2700K, 1100 Lumens
- IP Code:** 44
- Dimming:** Integrated dimmer on the product.
- Dimensions:** Ø22.7cm  
Height: 22.7cm



**For all sales and technical enquiries, please contact:**

+44 (0)114 263 4266

[info@davidvillagelighting.co.uk](mailto:info@davidvillagelighting.co.uk)

[www.davidvillagelighting.co.uk](http://www.davidvillagelighting.co.uk)