

LEE BROOM

Lee Broom Alchemist Solstice Trio Pendant

LA11100/STP

SOURCE: <https://www.davidvillagelighting.co.uk/product/Lee-Broom-Alchemist-Solstice-Trio-Pendant/10002042>



PRODUCT DESCRIPTION

Designer: Lee Broom

Lee Broom Alchemist Solstice Trio Pendant Light

The Solstice Trio Pendant takes inspiration from the ancient monument of Stonehenge, aligning with Lee Broom's signature style of blending historical reference with contemporary design. The pendant is formed of three opal glass globes that represent the sun's alignment during the solstices, encased within a blackened brass frame. The square brass structure references the monumental stones of Stonehenge, while the opal globes offer a radiant, ambient glow.

The Solstice Trio Pendant is perfect for both residential and commercial interiors, its striking design and adjustable suspension making it versatile for any space. Whether installed as a standalone piece or in clusters, this pendant brings an air of elegance and history to any setting.

PRODUCT SPECIFICATION

Light Source: 3x Max 3W G9 LED (Included)

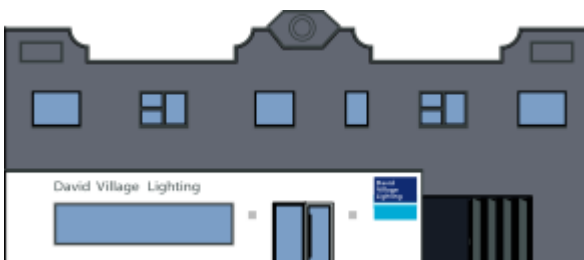
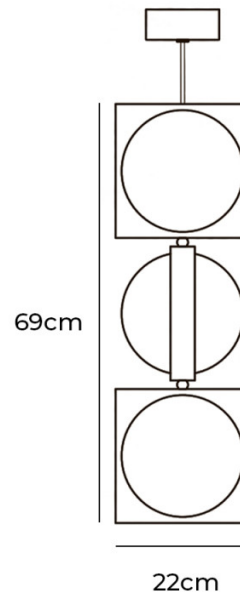
IP Code: 20

Dimming: Dimmable via Triac dimming.

Dimensions: Pendant:
 Height: 69cm
 Width: 22cm
 Diameter: 20cm

Canopy:
 Diameter: 12cm
 Height: 5cm

Cable length: Max 300cm (adjustable)



For all sales and technical enquiries, please contact:

+44 (0)114 263 4266

info@davidvillagelighting.co.uk

www.davidvillagelighting.co.uk