

PORTA ROMANA

Porta Romana Marley Pendant

LA11090

SOURCE: <https://www.davidvillagelighting.co.uk/product/Porta-Romana-Marley-Pendant/10002026>



PRODUCT DESCRIPTION

Designer: Porta Romana Lighting

Porta Romana Marley Pendant Light

Inspired by a hat seen in a Christian Dior exhibition, the Marley Pendant by Porta Romana offers an artistic take on natural design. This pendant light is made from woven water hyacinth, a material known for its subtle textural variations, making each piece entirely unique.

Its organic shape and the natural finish bring a touch of the outdoors inside, complementing both minimalist and bohemian aesthetics. The Marley Pendant can be installed at varying heights, making it suitable for different spaces like dining areas, living rooms, or entranceways.

Pair this pendant with a warm LED bulb to create a welcoming, ambient glow that enhances the organic texture of the woven material.

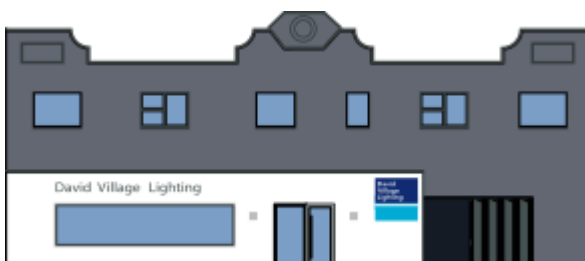
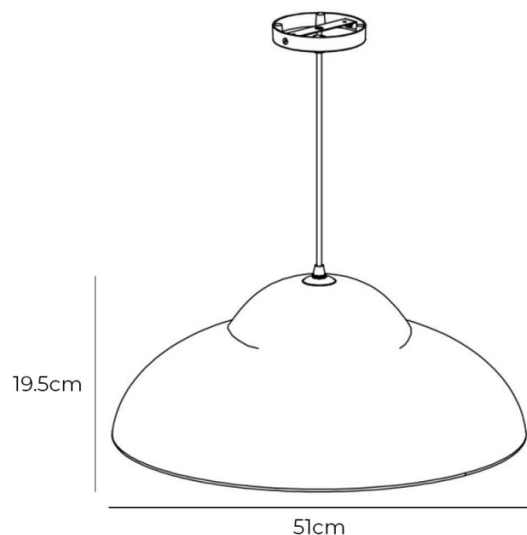
PRODUCT SPECIFICATION

Light Source: 1 x Max 8W LED E27 (Excluded)

IP Code: 20

Dimming: Dimmable via mains phase dimming.

Dimensions: Width: Ø51cm
Height: 19.5cm
Drop: 31.5cm - 121.5cm



For all sales and technical enquiries, please contact:

+44 (0)114 263 4266

info@davidvillagelighting.co.uk

www.davidvillagelighting.co.uk