

# Artemide A.24 Magnetic Track

LA11074

SOURCE: <https://www.davidvillagelighting.co.uk/product/Artemide-A24-Magnetic-Track/10001990>

## PRODUCT DESCRIPTION

**Designer:** Carlotta de Bevilacqua

### Artemide A.24 Magnetic Track

The Artemide A.24 Magnetic Track is a comprehensive and flexible system for designing light your space. Consisting of a slender metal profile that is 24mm thick, this system can be installed in a range of ways, including as a ceiling fixture, a suspension or as a recessed solution, it can also house various light sources. This makes A.24 a flexible system, as well as an open platform to accommodate other products from the Architectural collection. The suspension version also features direct emission. The three solutions can be alternated to match the architecture and the room functions with utmost flexibility.

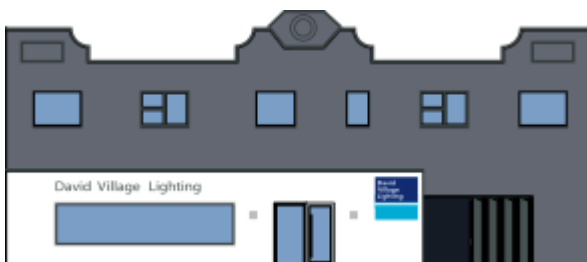
The A.24 Magnetic Track is available in five sleek finishes; black, bronze, copper silver or white. It can also be supplied in various lengths and with various joints to create a comprehensive and personalised lighting installation in your home.

**Please Note:** The Artemide A.24 Magnetic Track does not come supplied with [Artemide Vector Magnetic Track Lights](#), these can be ordered separately. Please [contact us](#) for more information and pricing.



## PRODUCT SPECIFICATION

- Light Source:** Available in 2700K, 3000K or 4000K colour temperature. Wattage and lumen output vary by luminaire type.
- IP Code:** 20
- Dimming:** Non-Dimmable.  
Dali dimmable available upon request.
- Dimensions:** Multiple options are available, contact us for more information.



**For all sales and technical enquiries, please contact:**

+44 (0)114 263 4266

[info@davidvillagelighting.co.uk](mailto:info@davidvillagelighting.co.uk)

[www.davidvillagelighting.co.uk](http://www.davidvillagelighting.co.uk)