

VIBIA

# Vibia Duo Petra LED Ceiling Light

LA11070

SOURCE: <https://www.davidvillagelighting.co.uk/product/Vibia-Duo-Petra-LED-Ceiling-Light/10001959>

## PRODUCT DESCRIPTION

Designer: Ramos & Bassols

### Vibia Duo Petra Ceiling Light

The Duo Petra LED Ceiling Light provides a timeless and elegant aesthetic to interiors, differing from the [Duo Dome Ceiling](#) with its interior slate lining. Designed by Ramos and Bassols, Duo Petra boasts curved lines and provides a direct but diffused illumination, it expertly combines a bold metallic exterior with an interior of natural textures.

This ceiling light can easily adapt to a range of spaces, offering a comfortable general illumination that is ideal for contemporary minimalist settings. The Vibia Duo Petra is perfectly designed for interiors with lower ceilings where a pendant fitting is not suitable and is available in either three minimalist finishes. This light allows you to choose between a flat or slanted installation - providing you with either a direct downlight or an angled glow.



## PRODUCT SPECIFICATION

**Light Source:** **Small:** 12W, 2700K, 644 Lumens  
**Large:** 26.5W, 2700K, 2207 Lumens

**IP Code:** 20

**Dimming:** Dimmable via 1-10V dimming systems. Please consult your electrician, additional wiring may be required on site.

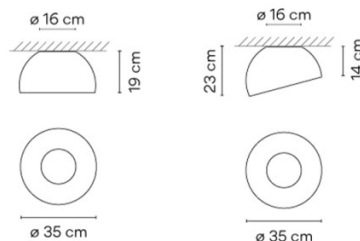
**Dimensions: Small:**  
Flat: Ø35cm, Depth: 19cm  
Angled: Ø35cm, Depth: 14cm-23cm

Ceiling Mount: Ø16cm

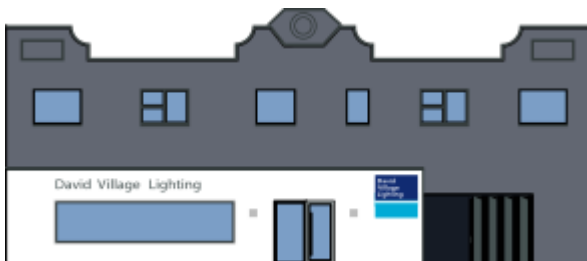
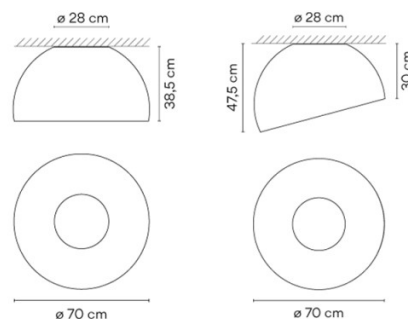
**Large:**  
Flat: Ø70cm, Depth: 38.5cm  
Angled: Ø70cm, Depth: 30cm-47.5cm

Ceiling Mount: Ø28cm

Small:



Large:



For all sales and technical enquiries, please contact:

+44 (0)114 263 4266

[info@davidvillagelighting.co.uk](mailto:info@davidvillagelighting.co.uk)

[www.davidvillagelighting.co.uk](http://www.davidvillagelighting.co.uk)