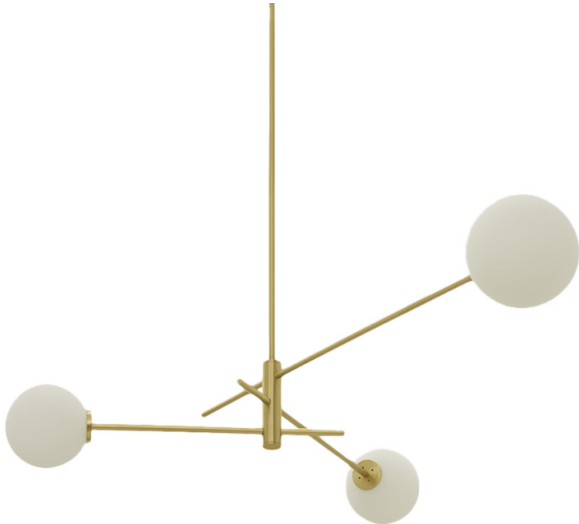


CTO Lighting Trevi Pendant

LA11034

SOURCE: <https://www.davidvillagelighting.co.uk/product/CTO-Lighting-Trevi-Pendant/10001828>



PRODUCT DESCRIPTION

Designer: CTO Lighting

CTO Lighting Trevi Pendant

Trevi Pendant was designed in-house at CTO Lighting. This stunning pendant was inspired by the famous fountain at the Piazza di Trevi, in Italy. Each arm of the Trevi pendant provides a perfectly balanced composition where lines meet and extend at the precisely formed central pillar. Suspended on a bronze or brass rod, the minimum drop height is 37.5cm for the small and 36cm for the large, ideal for above a dining table or coffee table.

Trevi Pendant is available with either 3 or 6 shades, a contemporary centrepiece has a satin brass or bronze finish with opal glass globe shades. Whether it is a residential or commercial establishment, Trevi Pendant has a refined design and high-end finish make it stand out and add a touch of elegance to any interior.

PRODUCT SPECIFICATION

Light Source: **Small** - 3x Max 4.5W, E14 (Excluded)
Large - 6x Max 4.5W, E14 (Excluded)

IP Code: 20

Dimming: Dimmable via mains phase dimmable

Dimensions: **Small**

Minimum drop height: 37.5cm

Body height: 26.5cm

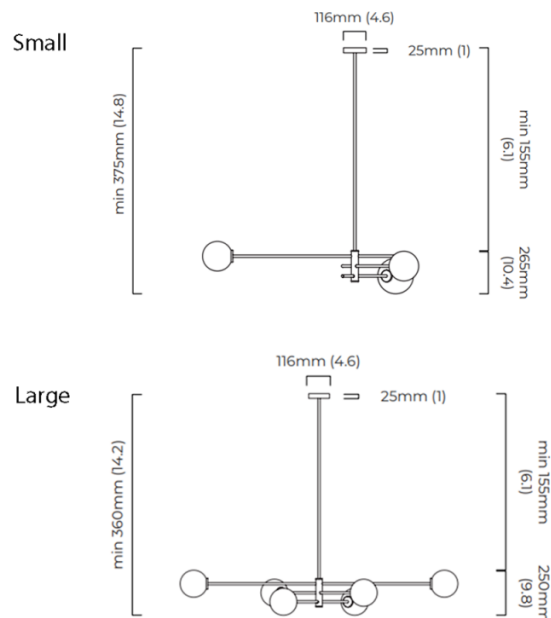
Rod height: 15.5cm

Large

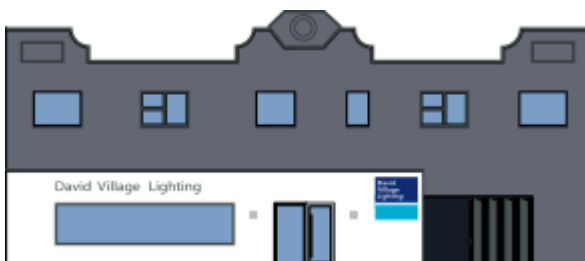
Minimum drop height: 36cm

Body height: 25cm

Rod height: 15.5cm



Diagrams not to scale



For all sales and technical enquiries, please contact:

+44 (0)114 263 4266

info@davidvillagelighting.co.uk

www.davidvillagelighting.co.uk