

lambert&fils

Lambert & Fils Dot Pendant

LA10991

SOURCE: <https://www.davidvillagelighting.co.uk/product/Lambert-Fils-Dot-Pendant/10001748>



PRODUCT DESCRIPTION

Designer: Lambert & Fils

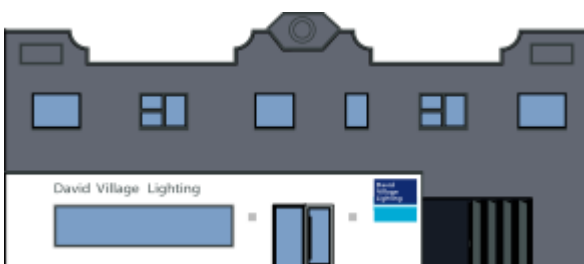
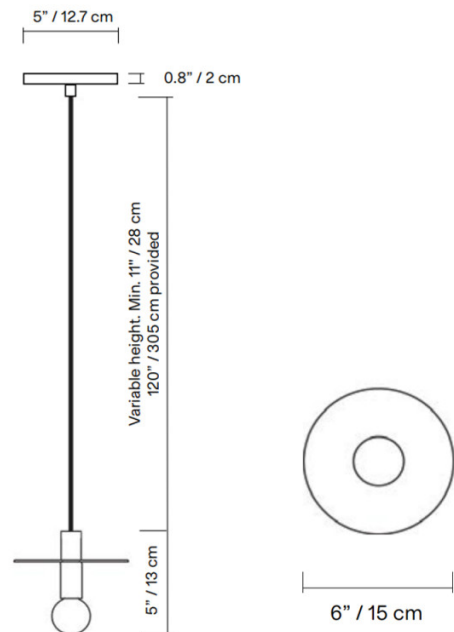
Lambert & Fils Dot Pendant

The Lambert & Fils Dot Pendant is a sleek and elegant luminaire, combining a brass structure with a spherical glass diffuser. It produces a sophisticated downlight which is further reflected off of the circular back plate that is fitted above the light source. Focused, geometric compositions contain these two features, balancing line, surface, and luminous points - resulting in a unique pendant light that is perfect for a range of contemporary interiors.

The Dot Pendant Light utilises high-quality materials and acclimates to an array of modern, minimalistic and even eclectic aesthetics, for this reason, it can be used in both residential and commercial settings. The Dot Suspension can be displayed above reception desks, countertops, kitchen islands, stairwells and even above bedside tables.

PRODUCT SPECIFICATION

- Light Source:** 1 x Max 3.5W G9 LED (included)
- IP Code:** 20
- Dimming:** Dimmable via mains phase dimming.
- Dimensions:**
 - Body Width: 15cm
 - Body Height: 13cm
 - Minimum Drop Height: 28cm
 - Maximum Drop Height: 305cm
 - Ceiling Canopy: Ø12.7cm



For all sales and technical enquiries, please contact:

+44 (0)114 263 4266

info@davidvillagelighting.co.uk

www.davidvillagelighting.co.uk