

**CLEARANCE  
OFFERS**

LA3049/CL

## KDLN Kushi 33 Ceiling Light CLEARANCE

SOURCE: <https://www.davidvillagelighting.co.uk/product/kdln-kushi-33-ceiling-light-clearance/10001606>



### PRODUCT DESCRIPTION

**Designer:** Alberto Saggia & Valerio Sommella

### KDLN Kushi 33 Ceiling Light

**Brand New, boxed in original packaging.**

**2 x Copper Available.**

**2 x Brass Available.**

The Kushi ceiling light was designed by Alberto Saggia & Valerio Sommella after being inspired by Japanese cuisine. 'Kushi' is Japanese for skewer and this inspiration can be seen within the design of this ceiling light. This KDLN ceiling lamp features a 'gently rounded glass shape pierced by a thin metal rod'. This unique design features two layers of mouth-blown glass that emits warm light that floats gently in the space.

This lamp would be an ideal addition to a hallway or dining area for the perfect lighting solution that effortlessly fills a space. The Kushi ceiling lamp by KDLN is a stunning and simple feature that would add impact as an individual fitting as well as in a cluster.

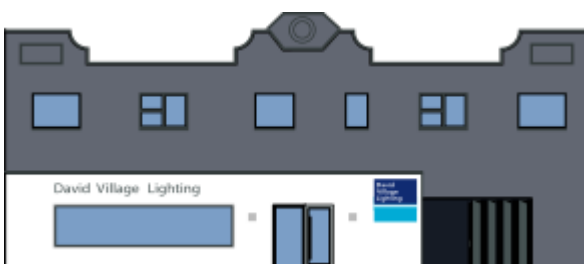
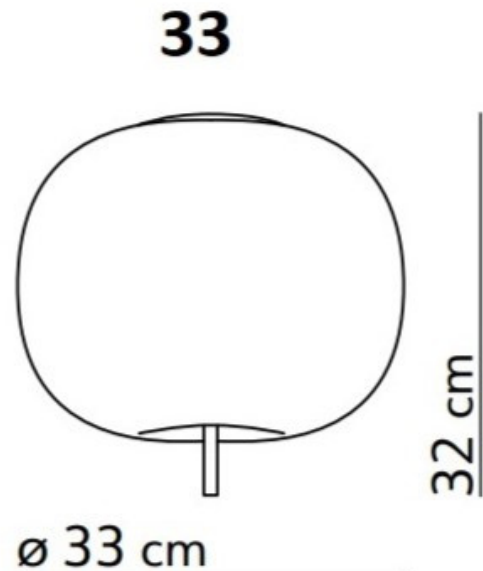
### PRODUCT SPECIFICATION

**Light Source:** 1 x Max 30W E27 (excluded)

**IP Code:** 20

**Dimming:** Dimmable via mains phase dimming.

**Dimensions:** Ø33cm  
Height: 32cm



**For all sales and technical enquiries, please contact:**

+44 (0)114 263 4266

[info@davidvillagelighting.co.uk](mailto:info@davidvillagelighting.co.uk)

[www.davidvillagelighting.co.uk](http://www.davidvillagelighting.co.uk)