

pholc

Pholc Apollo Zero Pendant

LA10943/Z

SOURCE: <https://www.davidvillagelighting.co.uk/product/Pholc-Apollo-Zero-Pendant/10001545>



PRODUCT DESCRIPTION

Designer: Broberg & Ridderstråle

Pholc Apollo Zero Pendant

Pholc Apollo Zero Pendant was designed by Broberg & Ridderstråle in 2018. The pair strive to add an emotional value to their designs that communicates with the users by recognising symbols and meanings. Their inspiration is drawn from everyday life, a rational approach, and a pinch of wit. Apollo Zero Pendant has a unique character due to its conical-shaped shade which is attached to a 300cm cable like a spinning gyro.

Apollo Zero Pendant can be hung independently or displayed in a cluster for a striking visual feature. A great option for commercial settings such as museums, hotel lobbies or over a reception desk. This pendant can also be featured in a residential setting above an island or kitchen table, independently or in a cluster. [Pholc Apollo collection](#) consists of two different shaped pendants, a wall light and a floor lamp.

PRODUCT SPECIFICATION

Light Source: 1x Max 10W, GU10 (Excluded)

IP Code: 20

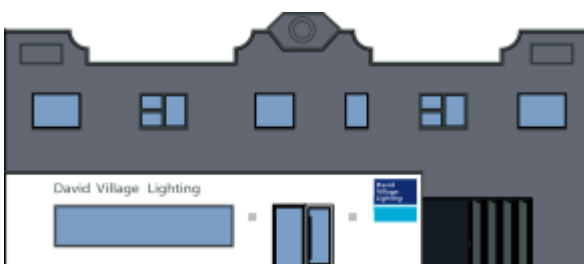
Dimming: Dimmable via mains phase dimming

Dimensions: Diameter: Ø 12.5cm
Height: 9.5cm
Cable: 300cm

9.5cm



Ø 12.5



For all sales and technical enquiries, please contact:

+44 (0)114 263 4266

info@davidvillagelighting.co.uk

www.davidvillagelighting.co.uk