

**vitra.**

**Vitra Akaria 23A Pendant**

LA10939

SOURCE: <https://www.davidvillagelighting.co.uk/product/Vitra-Akaria-23A-Pendant/10001513>



**PRODUCT DESCRIPTION**

**Designer:** Isamu Noguchi

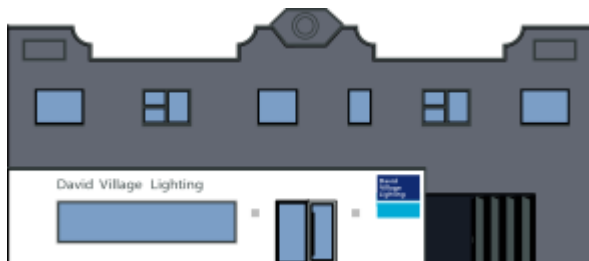
**Vitra Akari 23A Pendant**

Boasting a slightly more unique shade shape to the rest of the collection, the vitra Akari 23A Pendant is perfect for more narrow spaces. Designed by Isamu Noguchi, this pendant utilises a washi paper shade that filters out the harshness of the light source and results in a calming ambient illumination.

Noguchi found inspiration for this pendant light during a trip to Japan, he visited Gifu, a town known for its manufacture of paper lanterns. While there he sketched his very first Akari Light Sculptures, he chose the title 'Akari' for these pieces as the word means 'light' in Japanese. The vitra Akari 23A Pendant is handcrafted by expert Japanese artisans, and each production is marked with a sun and moon emblem in order to validate authenticity.

**PRODUCT SPECIFICATION**

- IP Code:** 20
- Dimming:** Non-Dimmable.
- Dimensions:** Shade Width: 32cm  
Shade Height: 70cm  
Cable Length: 220cm



**For all sales and technical enquiries, please contact:**

+44 (0)114 263 4266

info@davidvillagelighting.co.uk

www.davidvillagelighting.co.uk