

**Artemide**  
ARCHITECTURAL

LA10938/S

# Artemide Architectural Tagora LED Suspension Light

SOURCE: <https://www.davidvillagelighting.co.uk/product/Artemide-Architectural-Tagora-LED-Suspension-Light/10001492>

## PRODUCT DESCRIPTION

**Designer:** S.R. Cornelissen

### Artemide Architectural Tagora LED Suspension

S.R. Cornelissen designed the Artemide Architectural Tagora Suspension which provides a functional downlight, making it perfect for above counters, kitchen islands, dining tables and stairwells. The sleek aluminium body is available in a range of different two-toned finishes: black/orange, black/green, black/blue, beige/white or grey/white. It also grants you the choice between four sizes.

The Tagora 80 and 270 offer a high-output spotlight with aluminium optics, whilst the Tagora 270 uses a proprietary system based on a hybrid combined lens and reflector optic and the Tagora 570 and 970 come with a PMMA diffuser, offering a comfortable diffused light. The steel suspension cables of the Tagora allow for quick adjustment, offering an initial 2-metre drop height, you can also choose between dimmable or non-dimmable options, depending on the version.

## PRODUCT SPECIFICATION

**Light Source:** **Tagora 80:** 14W, 3000K, 1027 Lumens  
**Tagora 270:** 34W, 3000K, 1926 Lumens  
**Tagora 570:** 54W, 3000K, 3319 Lumens  
**Tagora 970:** 95W, 3000K, 6947 Lumens

**IP Code:** 20

**Dimming:** Dimmable via Dali dimming systems. Please consult your electrician, additional wiring may be required.

**Dimensions: Tagora 80:**  
Ø8cm  
Shade Height: 33cm  
Ceiling Canopy: Ø10cm

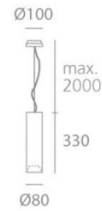
**Tagora 270:**  
Ø27cm  
Shade Height: 33cm  
Ceiling Canopy: Ø18cm

**Tagora 570:**  
Ø57cm  
Shade Height: 19cm  
Ceiling Canopy: Ø18cm

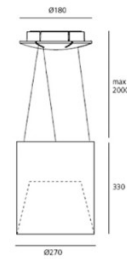
**Tagora 970:**  
Ø97cm  
Shade Height: 23cm  
Ceiling Canopy: Ø18cm

Drop Height: 200cm

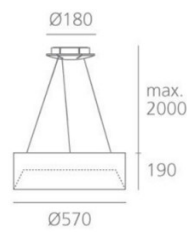
Tagora 80:



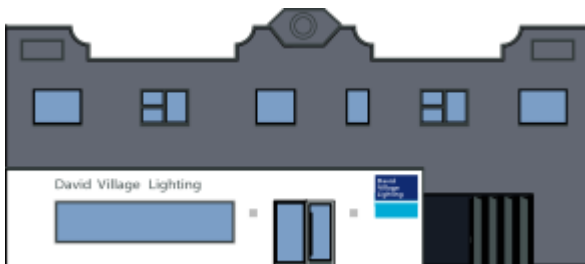
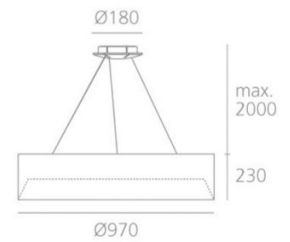
Tagora 270:



Tagora 570:



Tagora 970:



**For all sales and technical enquiries, please contact:**

+44 (0)114 263 4266

[info@davidvillagelighting.co.uk](mailto:info@davidvillagelighting.co.uk)

[www.davidvillagelighting.co.uk](http://www.davidvillagelighting.co.uk)