

LODES

LA10922

## Lodes Bugia LED Ceiling / Wall Light

SOURCE: <https://www.davidvillagelighting.co.uk/product/Lodes-Bugia-LED-Ceiling-Wall-Light/10001447>

### PRODUCT DESCRIPTION

**Designer:** Andrea Tosetto

## Lodes Bugia LED Ceiling / Wall Light



The Bugia LED Ceiling/Wall Light is a contemporary design by Andrea Tosetto for Lodes. It features circular forms that create the perfect balance between direct and indirect light, which is diffused both downward and up toward the ceiling. When illuminated, the Lodes Bugia catches the eye and creates an ambient glow and when turned off it resembles a piece of art in your room. Bugia is ideal for lighting up any sized space and offers a wide range of compositions for you to choose from, this LED Ceiling/Wall Light is available in three size variations: single, double or triple. You can also choose between four modern finishes: Black, White, Chrome or Copper.

The Lodes Bugia Single is supported by a metal structure fixed to the ceiling with magnets, while the Double, Triple and Mega versions are supported by a round closure element in the same colour as the diffuser. The characteristic slim form of the Bugia Ceiling/Wall Light blends in with its surroundings, offering you elegant notes of light and guaranteeing to be a conversation starter when you hosts guests. This contemporary lighting solution is perfect for your living space, entryway, hallway, bedroom and even commercial spaces such as bars, restaurants and hotel lobbies.

**The Lodes Bugia LED Ceiling/Wall Light can also be supplied with a colour temperature of 3000K. Please [contact us](#) for more information and pricing.**

## PRODUCT SPECIFICATION

**Light Source:** **Single:** 15W, 2700K, 1245 Lumens  
**Double:** 2 x 15W, 2700K, 2490 Lumens  
**Triple:** 3 x 15W, 2700K, 3735 Lumens

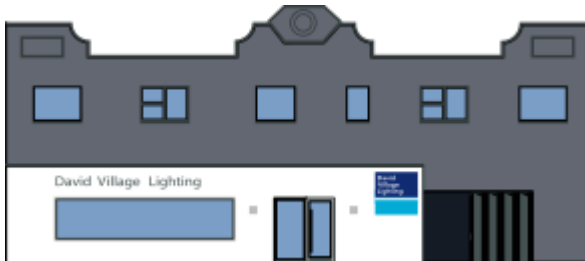
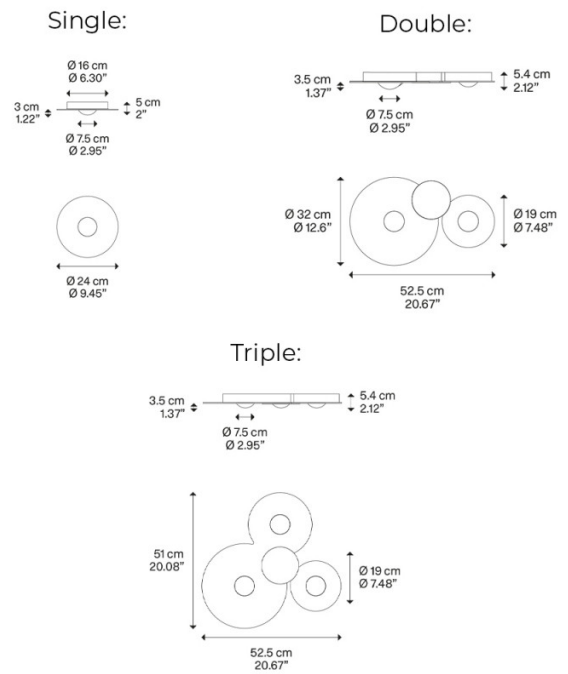
**IP Code:** 20

**Dimming:** Dimmable via Triac dimming.

**Dimensions: Single:**  
Ø24cm  
Depth: 5cm  
Mount: Ø16cm

**Double:**  
Width: 52.5cm  
Maximum Height: 32cm  
Depth: 5.4cm

**Triple:**  
Width: 52.5cm  
Maximum Height: 51cm  
Depth: 5.4cm



**For all sales and technical enquiries, please contact:**

+44 (0)114 263 4266

[info@davidvillagelighting.co.uk](mailto:info@davidvillagelighting.co.uk)

[www.davidvillagelighting.co.uk](http://www.davidvillagelighting.co.uk)