

Normann Copenhagen Hat Pendant

LA10892/P

SOURCE: <https://www.davidvillagelighting.co.uk/product/Normann-Copenhagen-Hat-Pendant/10001366>



PRODUCT DESCRIPTION

Designer: Simon Legald

Normann Copenhagen Hat Pendant

Normann Copenhagen Hat Pendant was created by the Royal Danish Academy of Fine Arts graduate, Simon Legald. The Hat Pendants were designed and released in 2023. The silhouette of the pendants is the logic behind the name, Hat. Each shade of the Hat emits a generous amount of direct downward light. The clean and simplistic design provides an instinctive indication of how the light is cast. The lampshades extend upward into a cylinder which showcases the design process where functionality has paved the way for the design expression.

Hat Pendant looks modern and minimalistic above a dining table or island in a cluster or singularly. The shade of the Hat Pendant is available in two colours: black and warm grey and available in three sizes. Hat has been designed to add a touch of minimalistic luxury to any space, be it a home or a commercial establishment.

PRODUCT SPECIFICATION

Light Source: 1x Max 8W, E27 LED (Excluded)

IP Code: 20

Dimming: Dimmable via mains phase dimming

Dimensions: Small

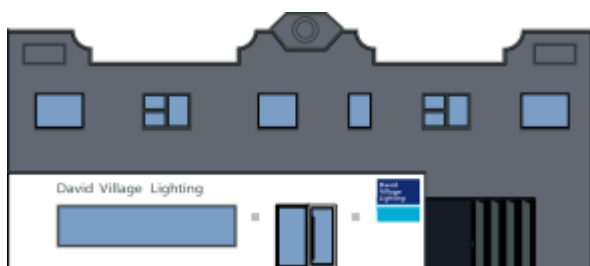
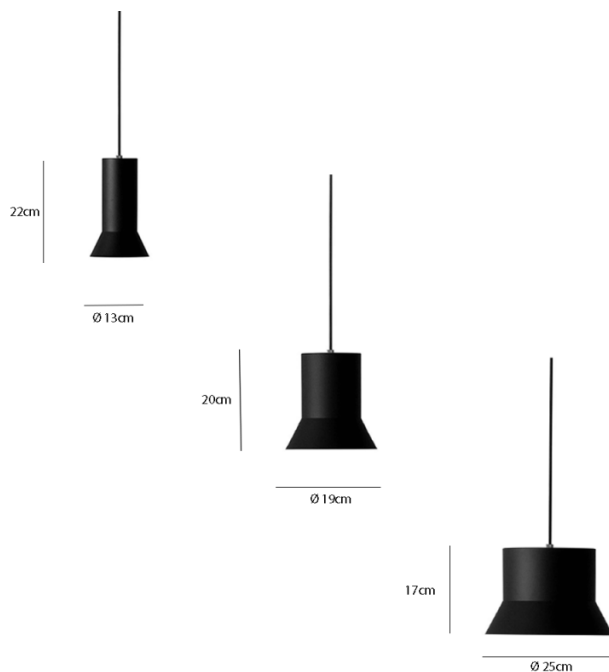
Height: 22cm
Shade: Ø 13cm
Cable: 400cm

Medium

Height: 20cm
Shade: Ø 19cm
Cable: 400cm

Large

Height: 17cm
Shade: Ø 25cm
Cable: 400cm



For all sales and technical enquiries, please contact:

+44 (0)114 263 4266

info@davidvillagelighting.co.uk

www.davidvillagelighting.co.uk