

pholc

# Pholc Donna Circle 60 Suspension

LA10881

SOURCE: <https://www.davidvillagelighting.co.uk/product/Pholc-Donna-Circle-60-Suspension/10001351>



## PRODUCT DESCRIPTION

**Designer:** Nina Jobs & Stina Sandwall

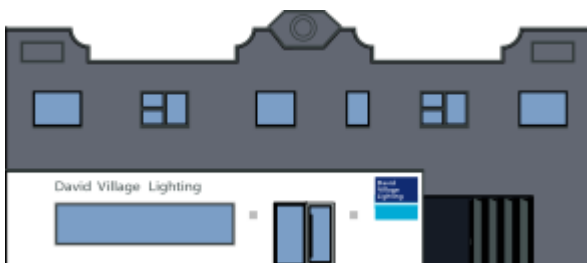
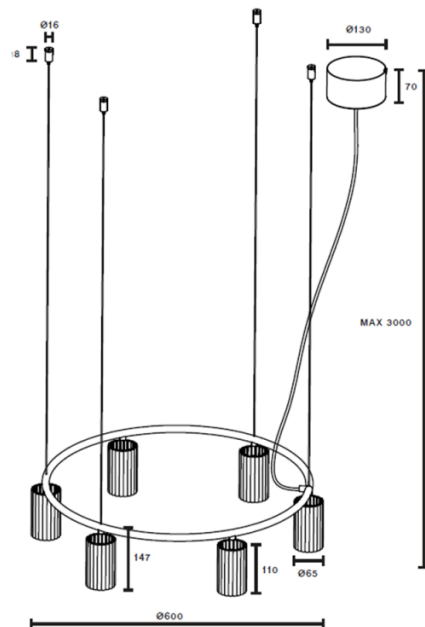
### Pholc Donna Circle 60 Suspension

Pholc Donna Circle 60 Suspension was created by the award-winning designers, Nina Jobs and Stina Sandwall in 2020. The Donna Circle 60 is as versatile as it is beautiful and can be displayed perfectly above a kitchen table or island. The structure was inspired by materials which were used in high fashion and the contradiction between softness and hardness.

The Donna Circle 60 plays with a manifestation of soft pleated fabrics which adds a feel of craftsmanship and warmth to any interior. Made from thin, lightweight aluminium with a smooth matte finish, the Donna circle 60 is a minimalistic suspension which adds a splash of sophistication to any room. The [Pholc Donna Circle collection](#) consists of two different-sized pendants, a wall lamp and a line pendant.

## PRODUCT SPECIFICATION

- Light Source:** 6x Max 7W LED GU10 (Excluded)
- IP Code:** 20
- Dimming:** Dimmable via mains phase dimming
- Dimensions:** Diameter: Ø 60cm  
Shade diameter: Ø 6.5cm  
Height: 300cm  
Shade height: 11cm



**For all sales and technical enquiries, please contact:**

+44 (0)114 263 4266

[info@davidvillagelighting.co.uk](mailto:info@davidvillagelighting.co.uk)

[www.davidvillagelighting.co.uk](http://www.davidvillagelighting.co.uk)