

NEMO

Nemo Lighting Crown Wall Light

LA10087/W

SOURCE: <https://www.davidvillagelighting.co.uk/product/Nemo-Lighting-Crown-Wall-Light/10001348>

PRODUCT DESCRIPTION

Designer: Jehs+Laub

Nemo Lighting Crown Wall Light

Nemo Lighting Crown Wall Light is designed by Jehs + Laub. The [Crown collection](#) draws inspiration in the form of a snowflake with its versatile and unique design structure. The Crown Wall Light looks idyllic and contemporary in any setting.

Crown Wall Light is available with either 2 LED halos or 4 LED halos and in a variety of colours. The structure of the wall light is made from die-casted aluminium whilst the light source is made from satin, sandblasted glass. The wall light from the Crown family has a height of 16cm and looks visually pleasing in hallways and atriums.



PRODUCT SPECIFICATION

Light Source: 2x Halo
2x 60W, G9 QT-14 (Excluded)

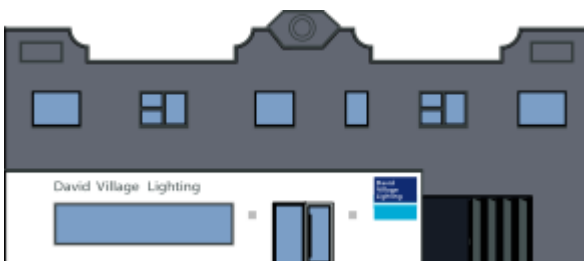
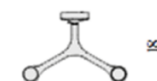
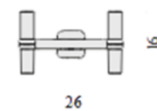
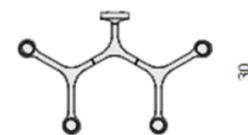
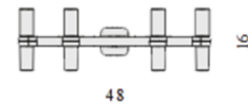
4x Halo
4x 60W, G9 QT-14 (Excluded)

IP Code: 20

Dimming: Dimmable via mains phase dimming

Dimensions: 2x Halo
Width: 26cm
Height: 16cm
Depth: 18cm

4x Halo
Width: 48cm
Height: 16cm
Depth: 30cm



For all sales and technical enquiries, please contact:

+44 (0)114 263 4266

info@davidvillagelighting.co.uk

www.davidvillagelighting.co.uk