

Petite
Friture

Petite Friture Brush Pendant

LA10863

SOURCE: <https://www.davidvillagelighting.co.uk/product/Petite-Friture-Brush-Pendant/10001304>



PRODUCT DESCRIPTION

Designer: Pierre Charrié

Petite Friture Brush Pendant

Petite Friture Brush Pendant by Pierre Charrié has a minimalistic structure with three powdered coated maximalist colours which are finished with a lacquered gloss. The indirect soft LED pendant creates a perfect spotlight above a dining area or kitchen island thanks to its unique dome shape. The structure of the shade is obtained by a mechanical spinning process which is actioned twice to ensure the oblong form.

Petite Friture Brush LED Pendants are available in small and large sizes which can all be hung singularly or in a cluster. The packaging for all brush pendants is made with at least 80% recycled cardboard.

PRODUCT SPECIFICATION

Light Source: 1 x Max 6W E27 LED (Excluded)

IP Code: 20

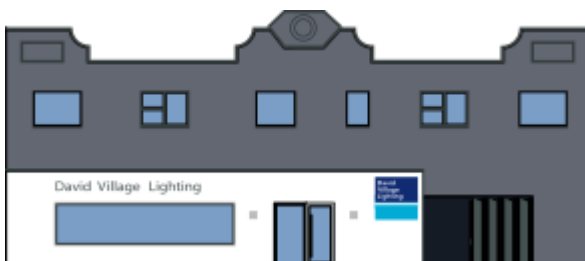
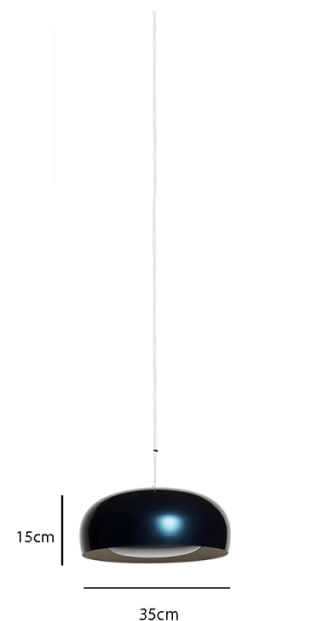
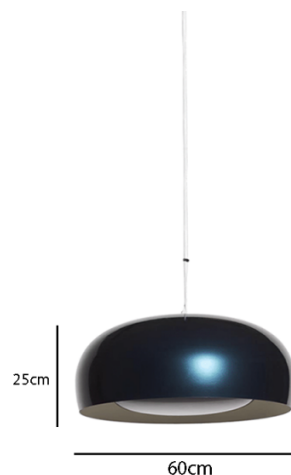
Dimming: Dimmable via mains phase dimming.

Dimensions: **Small**

Height: 15cm
Width: 35cm
Cable: 320cm

Large

Height: 25cm
Width: 60cm
Cable: 320cm



For all sales and technical enquiries, please contact:

+44 (0)114 263 4266

info@davidvillagelighting.co.uk

www.davidvillagelighting.co.uk