

a-emotional light

# a-emotional light Ura 304 Pendant

LA10840/304

SOURCE: <https://www.davidvillagelighting.co.uk/product/a-emotional-light-Ura-304-Pendant/10001301>



## PRODUCT DESCRIPTION

**Designer:** Arturo Alvarez

### a-emotional light Ura 304 Pendant

The Ura 304 pendant was designed by Arturo Alvarez for a-emotional lights. The inspiration for this pendant comes from nature and simple geometric forms. This can be seen in the linear pattern on the shade as well as the light that it projects onto surrounding walls. Alvarez plays with lighting to create a show of light which fills the room.

The Ura 304 is hand-made using a patented stainless-steel mesh. This mesh creates organic-looking shapes that are both durable and easy to clean with a damp cloth. It can be combined with other pendants from [The Ura Collection](#) to fill the space it's installed in. The direct downward lighting makes this pendant ideal above surfaces such as kitchen islands or tables, and the diffused light will fill the room with a warm, ambient glow.

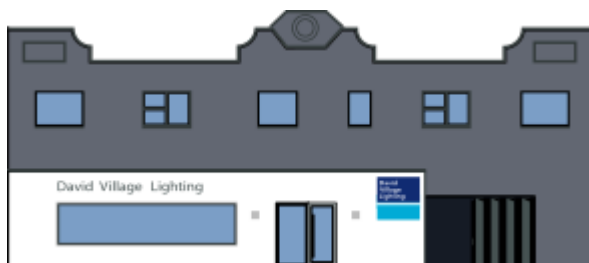
## PRODUCT SPECIFICATION

- Light Source:** 1 x Max 12W E27 LED (Excluded)
- IP Code:** 20
- Dimming:** Dimmable via mains phase dimming.
- Dimensions:** Ø33cm  
Height: 24cm  
Cable Length: 150cm

24cm



Ø33cm



**For all sales and technical enquiries, please contact:**

+44 (0)114 263 4266

info@davidvillagelighting.co.uk

www.davidvillagelighting.co.uk