

**louis poulsen**

# Louis Poulsen PH Luna Limited Edition Table Lamp

LA10832

SOURCE: <https://www.davidvillagelighting.co.uk/product/Louis-Poulsen-PH-Luna-Limited-Edition-Table-Lamp/10001229>

## PRODUCT DESCRIPTION

**Designer:** Poul Henningsen

### Limited Edition PH Luna Table Lamp by Louis Poulsen

The Louis Poulsen's Limited Edition PH Luna Table Lamp was designed by Poul Henningsen and was originally known as the nightstand lamp. The table lamp is based on the three-shade system by Henningsen which is dated back to 1926. The PH Luna table lamp also has a characteristic curved stem which was designed by Henningsen in 1939.

The Limited Edition PH Luna table lamp's classic design was created with three mouth blown glossy opal glass layers with an untreated brass stem and base with fine hairline details. The untreated brass will patina beautifully over time. The integrated on/off switch can be located at the base of the lamp and a directional adjuster found at the top.



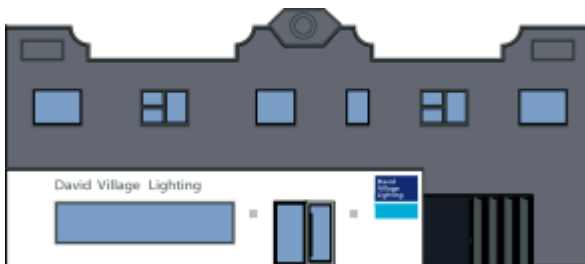
## PRODUCT SPECIFICATION

**Light Source:** 1 x Max 40W E27 (Excluded)

**IP Code:** 20

**Dimming:** Integrated on/off switch included on the base.

**Dimensions:** Height: 32.4cm  
 Stem Diameter: Ø25.5cm  
 Shade Diameter: Ø20cm  
 Base Diameter: Ø12cm  
 Length: 51.1cm



**For all sales and technical enquiries, please contact:**

+44 (0)114 263 4266

[info@davidvillagelighting.co.uk](mailto:info@davidvillagelighting.co.uk)

[www.davidvillagelighting.co.uk](http://www.davidvillagelighting.co.uk)