

Artemide

# Artemide Funivia Lighting System

LA10819

SOURCE: <https://www.davidvillagelighting.co.uk/product/Artemide-Funivia-Lighting-System/10001204>



## PRODUCT DESCRIPTION

**Designer:** Carlotta de Bevilacqua

### Artemide Funivia Lighting System

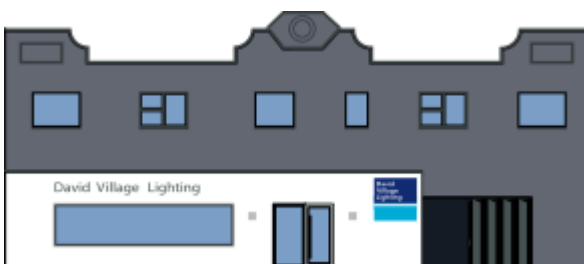
The Artemide Funivia is an incredibly personable lighting system, consisting of a cable structure and multiple light source options. This lighting solution adds a touch of drama to any setting and allows you to generate a unique configuration that perfectly compliments your room - providing creativity and functionality. Funivia offers pendants, spotlights or vertical suspensions; these light elements hook on the cable thanks to a "bridge" element, a kind of current-stealing lock that mechanically fixes the luminaire and takes energy from the cable. Funivia is attached to your wall, floor or ceiling through mechanical elements, and is powered through a singular power point.

Artemide Funivia provides a multitude of configurations and is a perfect addition to private and communal office spaces, large commercial buildings, studios or workshops and even contemporary rooms in residential homes. The possibilities are endless with this innovative lighting solution by Artemide.

**The Artemide Funivia Lighting System is available with either a black or red cable.**

## PRODUCT SPECIFICATION

- Light Source:** Available in 2700K, 3000K, 3500K or 4000K colour temperature. Wattage and lumen output vary by luminaire type.
- IP Code:** 20
- Dimming:** Push to make/switch dimming, dimmable using push to make switches. Please consult your electrician, additional wiring may be required on-site.
- Dimensions:** Multiple options are available, contact us for more information.



**For all sales and technical enquiries, please contact:**

+44 (0)114 263 4266

info@davidvillagelighting.co.uk

www.davidvillagelighting.co.uk