

LE KLINT Le Klint Model 180 Pendant

LA10806

SOURCE: <https://www.davidvillagelighting.co.uk/product/Le-Klint-Model-180-Pendant/10001088>



PRODUCT DESCRIPTION

Designer: Esben Klint

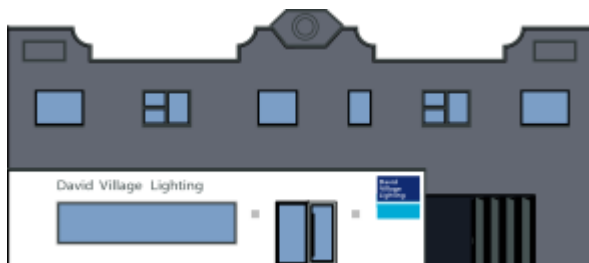
Le Klint Model 180 Pendant

The Le Klint Model 180 Pendant was released to mark the 80th anniversary of the brand. This light combines two of the most iconic Le Klint designs, the 107 Pendant and the 375 Table Lamp, to form a refined masterpiece. The 107 was initially designed in 1942 by Esben Klint and was created before Le Klint was founded, whereas the 375 table lamp was created to commemorate Le Klint's 75th anniversary in 2018.

Each 180 Pendant is made to order and is handcrafted in Denmark using high-quality wood, brass and paper. The textured and pleated shade encapsulates the light source and creates a soft, peaceful glow - making the Le Klint Model 180 Pendant perfect for ambient lighting in more tranquil spaces such as bedrooms and living areas. It can also make an impact in commercial spaces such as hotels, restaurants and cafes.

PRODUCT SPECIFICATION

- Light Source:** 1 x Max 20W E27 LED (excluded)
- IP Code:** 20
- Dimming:** Dimmable via mains phase dimming.
- Dimensions:** Shade Height: 35cm
Shade Width: 33cm



For all sales and technical enquiries, please contact:

+44 (0)114 263 4266

info@davidvillagelighting.co.uk

www.davidvillagelighting.co.uk